

PARCEL MAP 6630

FOR CONDOMINIUM PURPOSES

BEING A RESUBDIVISION OF LOTS 12,13,14,15,16,17 AND 18
BLOCK 15, KELLERSBERGER'S MAP OF OAKLAND,
FILED IN THE OFFICE OF THE COUNTY RECORDER
OF ALAMEDA COUNTY, ON SEPTEMBER 2, 1853.

CITY OF OAKLAND
COUNTY OF ALAMEDA
STATE OF CALIFORNIA

SCALE: 1" = 30'

NOVEMBER, 1993



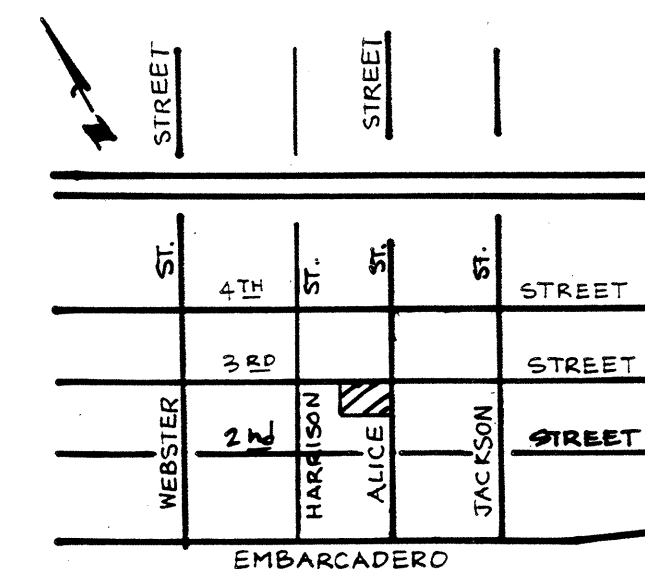
KIER & WRIGHT
CIVIL ENGINEERS & SURVEYOR'S, INC.
5880 West Las Fatas Boulevard, Suite 34
Pleasanton, California 94588 (510) 734-8060

OWNER:
HORIZON PARTNERS I
247 4TH STREET LOFT 401
OAKLAND, CA 94607
(510) 465-4248

LEGEND

---	EXTERIOR BOUNDARY LINE OF SUBDIVISION
---	MONUMENT LINE (M)
---	CENTER LINE (C) OF STREET
---	OLD LOT LINE
⊙	FOUND CITY MONUMENT
99.99 P	PRORATED DISTANCE
()	RECORD DISTANCE
SFNF	SEARCHED FOR NOT FOUND

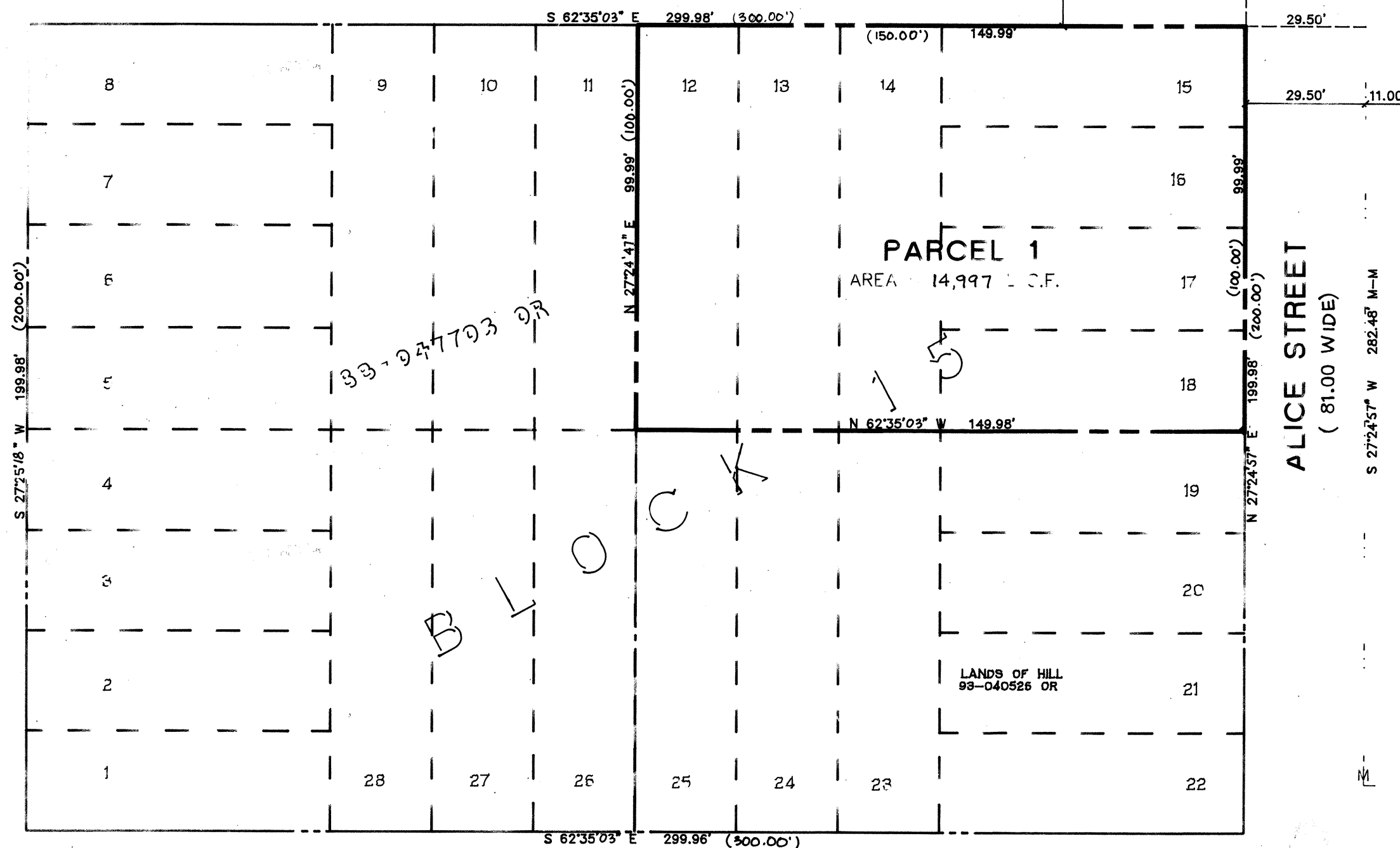
VICINITY MAP



SHEET 2 OF 2

BK 215 Pg 67

HARRISON STREET
(80.67 WIDE)



2 nd STREET
(80.5 WIDE)

NOTES:

- STREET RIGHT OF WAY WIDTHS SHOWN HEREON FROM THAT CERTAIN DOCUMENT ENTITLED "REPORT OF THE BOARD OF ENGINEERING ON GRADES, STREETS AND SEWERAGE IN THE CITY OF OAKLAND" DATED 1869, CITY FILE DOCUMENT 71-66.
- MONUMENT LINE LOCATIONS SHOWN HEREON WERE TAKEN FROM THE CITY OF OAKLAND MONUMENT MAP NO. 1488B476.
- BASIS OF BEARINGS: THE BEARING NORTH 27° 24' 57" EAST, TAKEN ON THE MONUMENT LINE OF ALICE STREET BETWEEN 3RD STREET AND 2ND STREET AS SHOWN UPON PARCEL MAP NO. 6400. RECORDED IN BOOK 208 AT PAGES 65-67, ALAMEDA COUNTY RECORDS WAS TAKEN AS THE BASIS FOR ALL BEARINGS SHOWN HEREON.