

PERFORMANCE TEST FOR LISTED MECHANICAL HOOD IS REQUIRED PER UMC 509.11

GREASE HOOD SYSTEM CALCULATION

1. TYPE : CANOPY TYPE I, STAINLESS STEEL 18 GAUGE,
2. COOKING EQUIPMENT: (2) CHINESE RANGE, (2) DEEP FRYER, RICE COOKER
3. SIZE: 23'-6" x 4'-0" + 2'-0" MAKEUP AIR PLENUM
4. MIN. REQ'D CAPACITY CFM: (2) U.L. LISTED HOOD @ 3,450 CFM EACH
5. PROPOSED (2) EXHAUST FAN & (1) MAKE-UP AIR UNIT, EF1 & EF2 (3,450 CFM EACH); MAU1 (5,520 CFM, 80% OF EXHAUST)
6. EXHAUST DUCT SIZE: 22"x14"
7. EXHAUST VELOCITY @ EXHAUST DUCT  $3450/(22"x14"/144) = 1612$  FPM  $1500\text{FPM} < 1612\text{FPM} < 2500\text{FPM}$
8. EXHAUST FAN (EF1 & EF2) AND MAKE-UP AIR UNIT (MAU1) SHALL BE ELECTRICALLY INTERLOCKED
9. FOR CODE COMPLIANCE SEE DETAIL
10. FOR FILTER INFORMATION SEE CAPTIVEAIRE DWG #M-400.
11. INTERLOCK RTU FANS TO OPERATE WITH KEF'S FOR MAKEUP AIR.

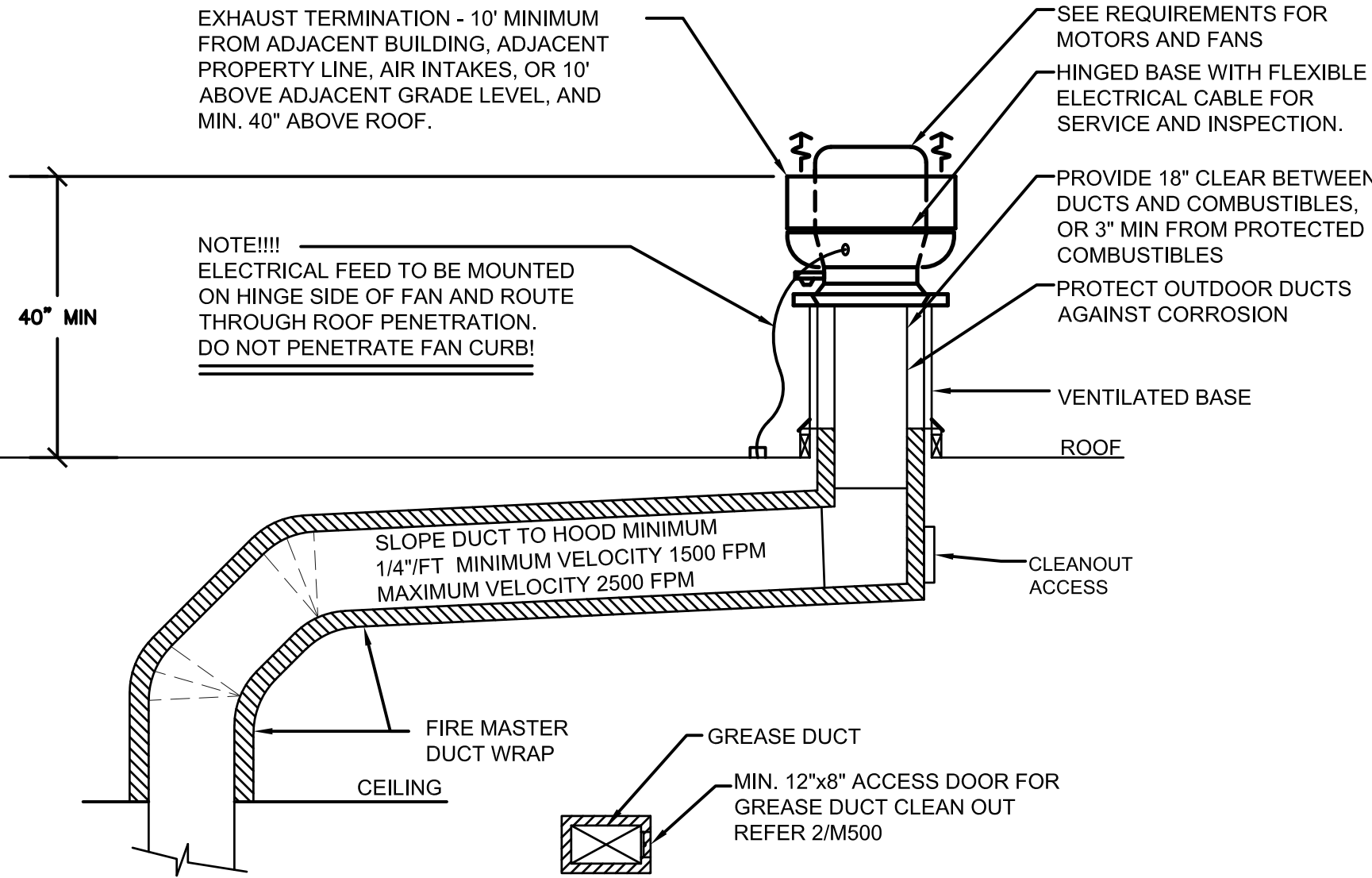
INFORMATIONAL GUIDE FOR COMMERCIAL COOKING HOODS

1. STAINLESS STEEL TO BE NO. 18 U.S. GAGE.
2. WHEN GUTTERS ARE PROVIDED THEY SHALL DRAIN TO A COLLECTING PAN WHICH IS READILY ACCESSIBLE FOR CLEANING
3. SEE TABLE 507.11 FOR MINIMUM DISTANCE BETWEEN LOWER EDGE OF GREASE FILTER AND THE COOKING OR HEATING SURFACE.
4. GREASE FILTERS SHALL BE OF STEEL CONSTRUCTION AND READILY ACCESSIBLE FOR CLEANING.
5. ALL JOINTS AND SEAMS SHALL BE GREASE TIGHT.
6. HOODS SHALL BE SECURELY FASTENED IN PLACE BY INCOMBUSTIBLE SUPPORTS.

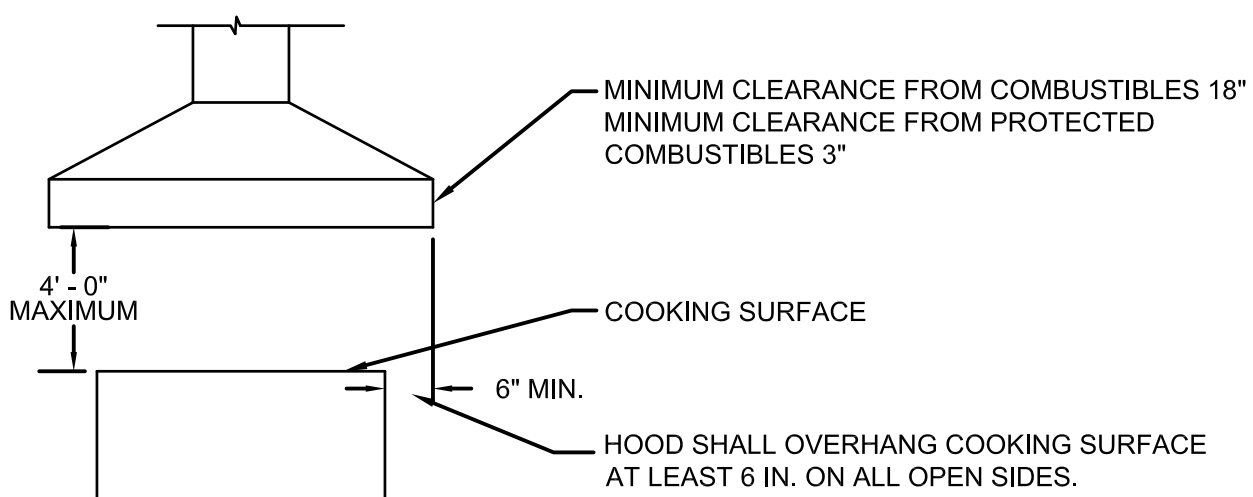
NOTES

1. PROVIDE ADEQUATE CLEANOUT OPENINGS FOR THOROUGH CLEANING OF DUCT SYSTEM.
2. PROVIDE ADEQUATE MAKE-UP AIR FOR PROPER OPERATION.
3. PROVIDE A SEPARATE DUCT SYSTEM FOR EACH HOOD.
4. THICKNESS OF DUCTS SHALL BE:

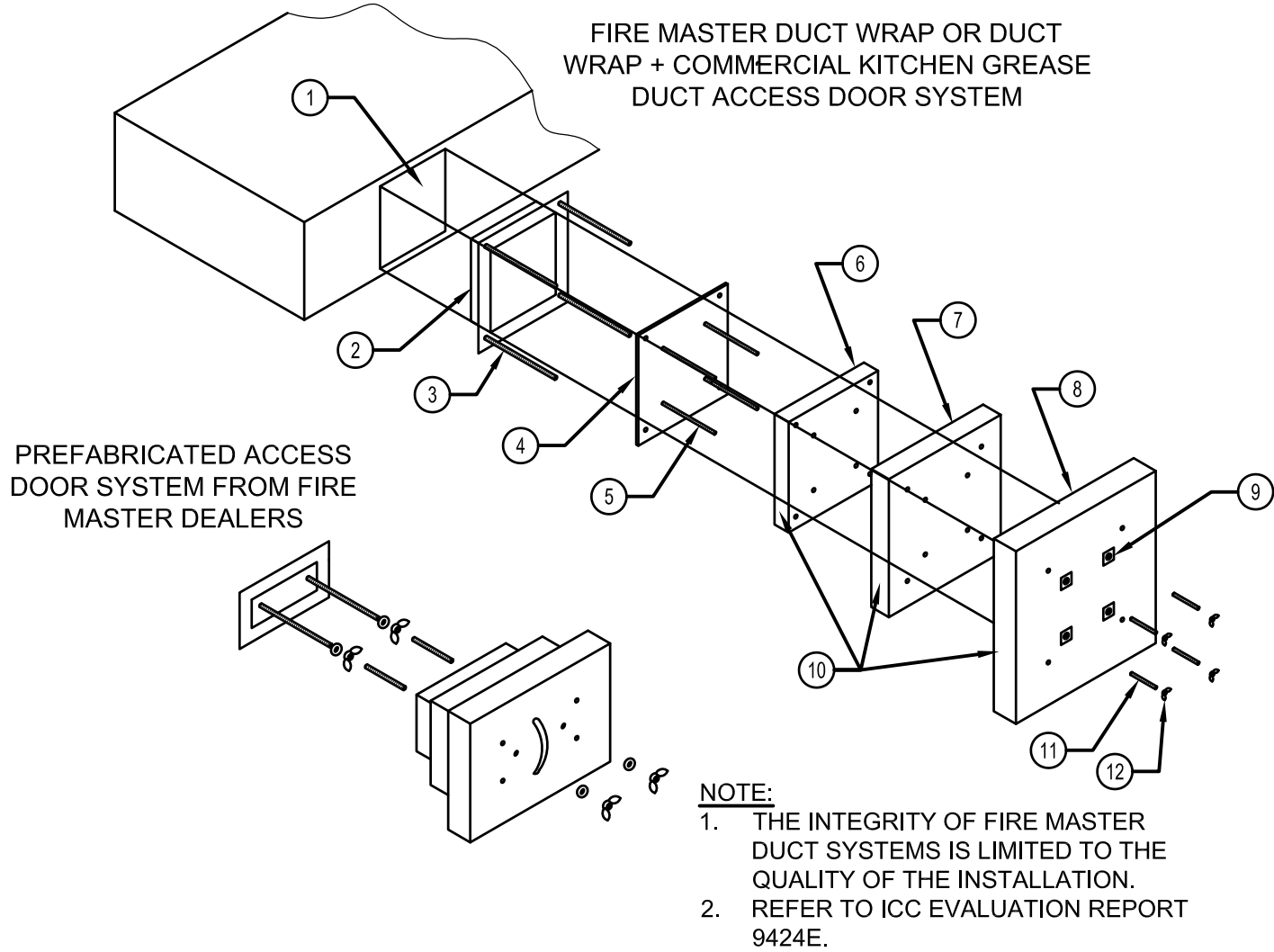
DUCT AREA	U.S. GAGE STEEL
UP TO 4 SQ. FT.	16 GA
OVER 4 SQ. FT.	14 GA
5. WELD OR BRAZE ALL DUCT JOINTS AND SEAMS ON THE EXTERNAL SURFACE.
6. SUPPORT THE DUCTS AS REQUIRED, DO NOT PENETRATE DUCT WALLS WITH SCREWS, NAILS, ETC.
7. SECTIONS OF DUCT SHALL NOT CONTAIN GREASE POCKETS.



CLEAN OUT DOOR DETAIL  
N.T.S.



(FOR REFERENCE ONLY)

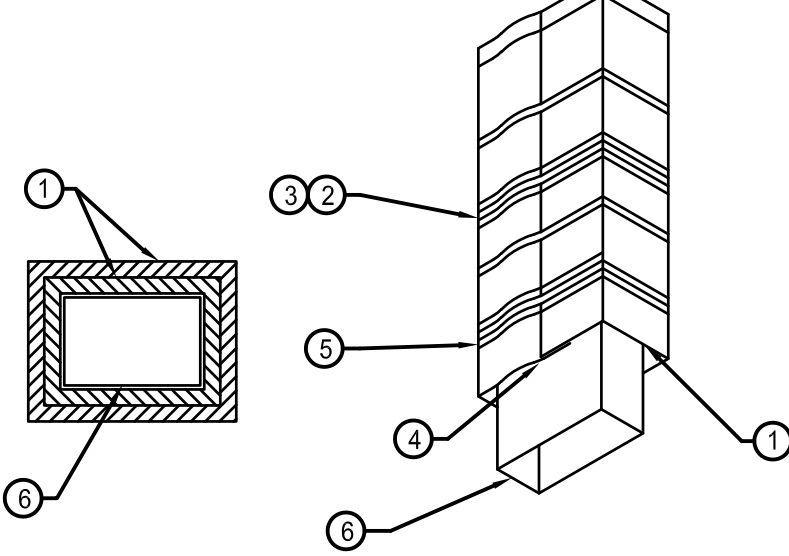


FIRE MASTER DUCT WRAP or DUCT WRAP+	
1	DOOR HOLE
2	ACCESS FRAME WELDED TO DUCT
3	3/4" DIA. ALL THREAD RODS
4	ACCESS COVER - 16 GAUGE
5	INSULATION PINS - WELDED
6	ONE LAYER FIRE MASTER DUCT WRAP or DUCT WRAP +
7	ONE LAYER FIRE MASTER DUCT WRAP or DUCTWRAP + 1" OVERLAP
8	ONE LAYER FIRE MASTER DUCT WRAP or DUCTWRAP + 1" OVERLAP
9	SPEED CLIPS
10	ALUMINUM TAPE AT EDGES
11	SPOOL PIECES FOR THREADED RODS
12	1/4" DIA. WING NUTS

GREASE DUCT ACCESS DOOR 2

M-500

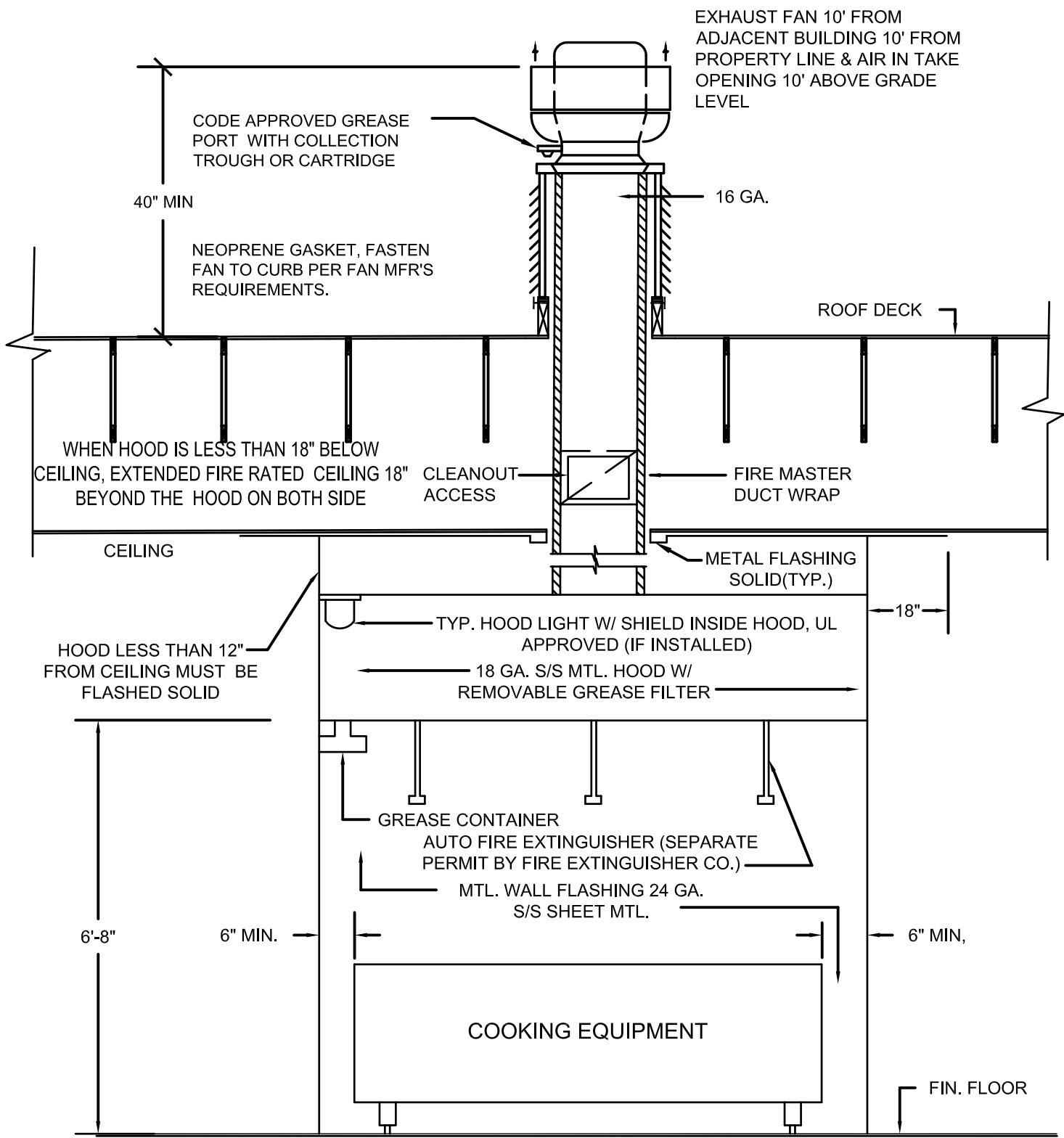
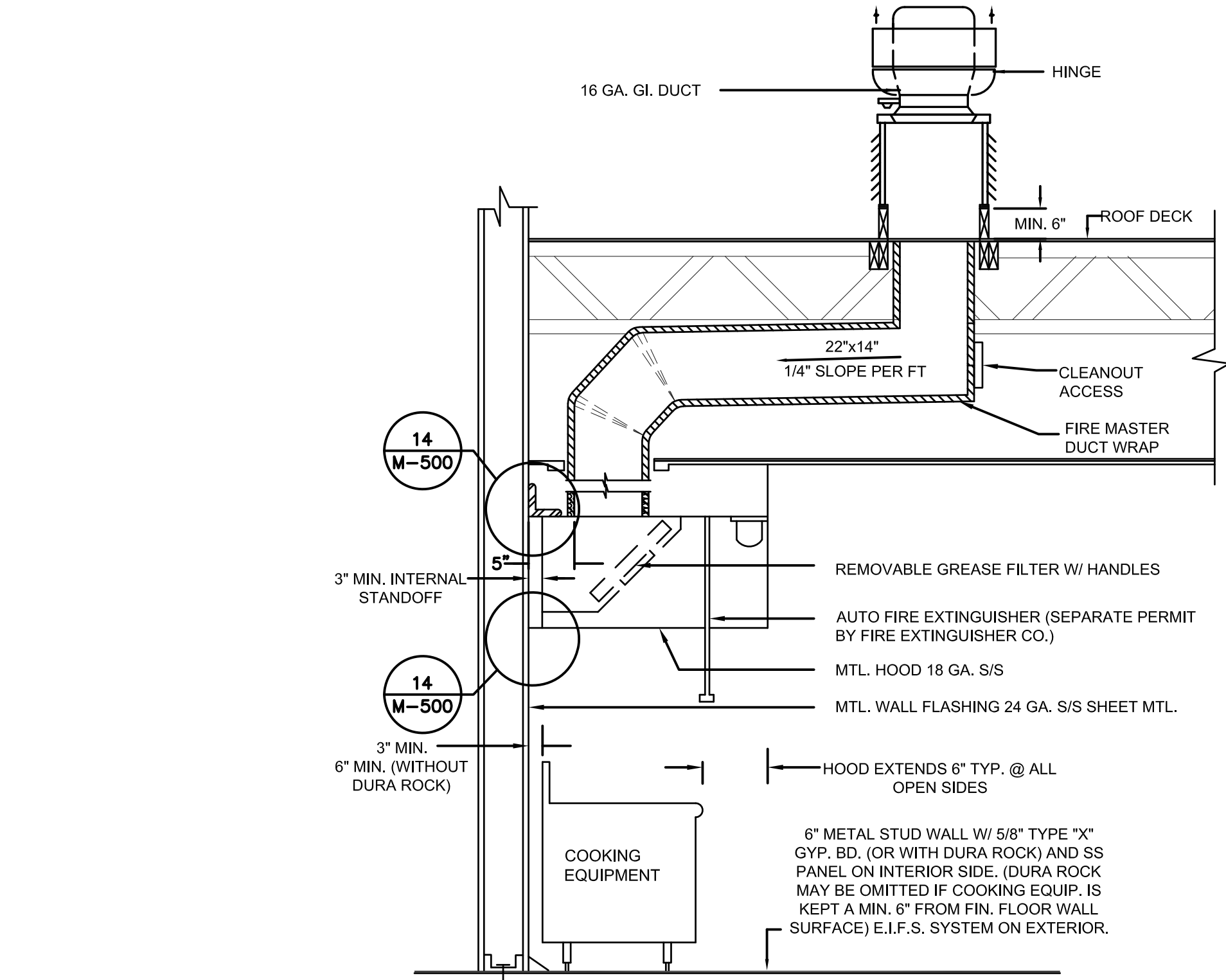
NOTE:  
GREASE EXHAUST DUCT INSULATION TYPE FIRE MASTER FASTWRAP+ SILICON SEALANT APPROVED FOR 2-HOUR STRUCTURE.



LEGEND	
1	TWO LAYERS FIRE MASTER FASTWRAP+
2	FILAMENT TAPE
3	BANDING
4	3-INCH PERIMETER OVERLAP
5	3-INCH LONGITUDINAL OVERLAP
6	GREASE DUCT

FOR SI: 1 INCH=25.4 MM UL # GL-18

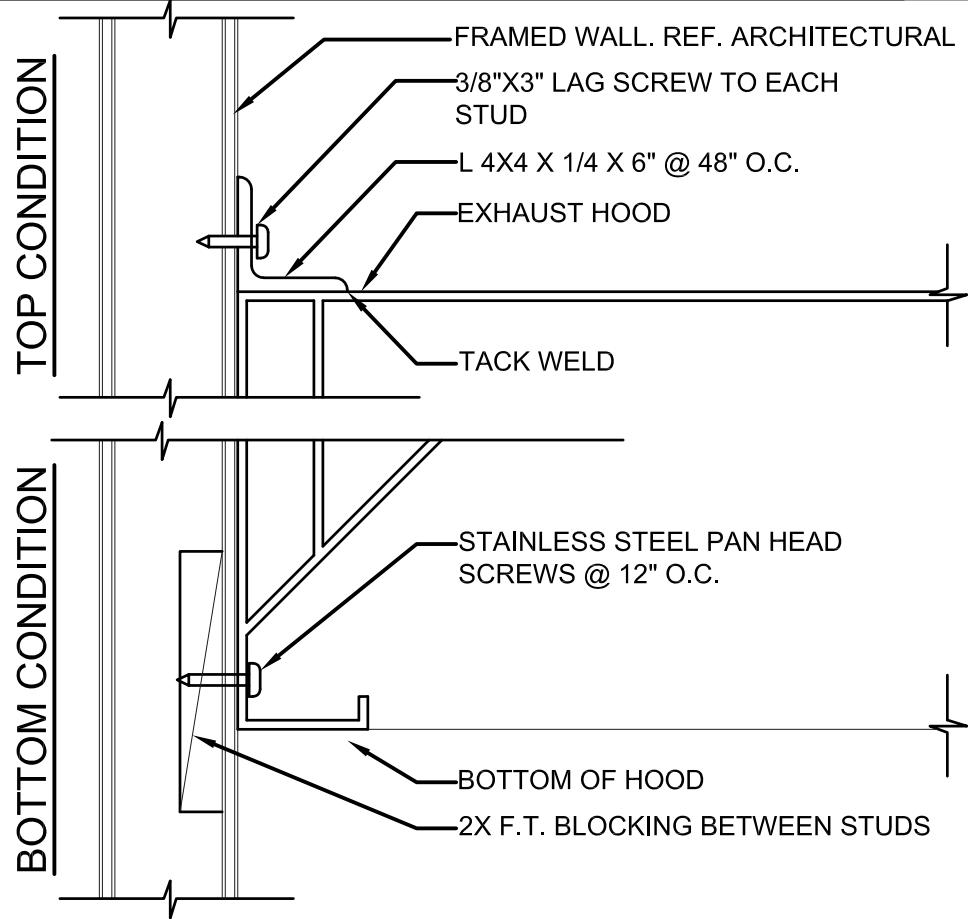
FIGURE 2-HOUR FIRE-RESISTIVE PROTECTION SYSTEM FOR GREASE DUCTS



HOOD SECTIONS 18

Scale: NO SCALE

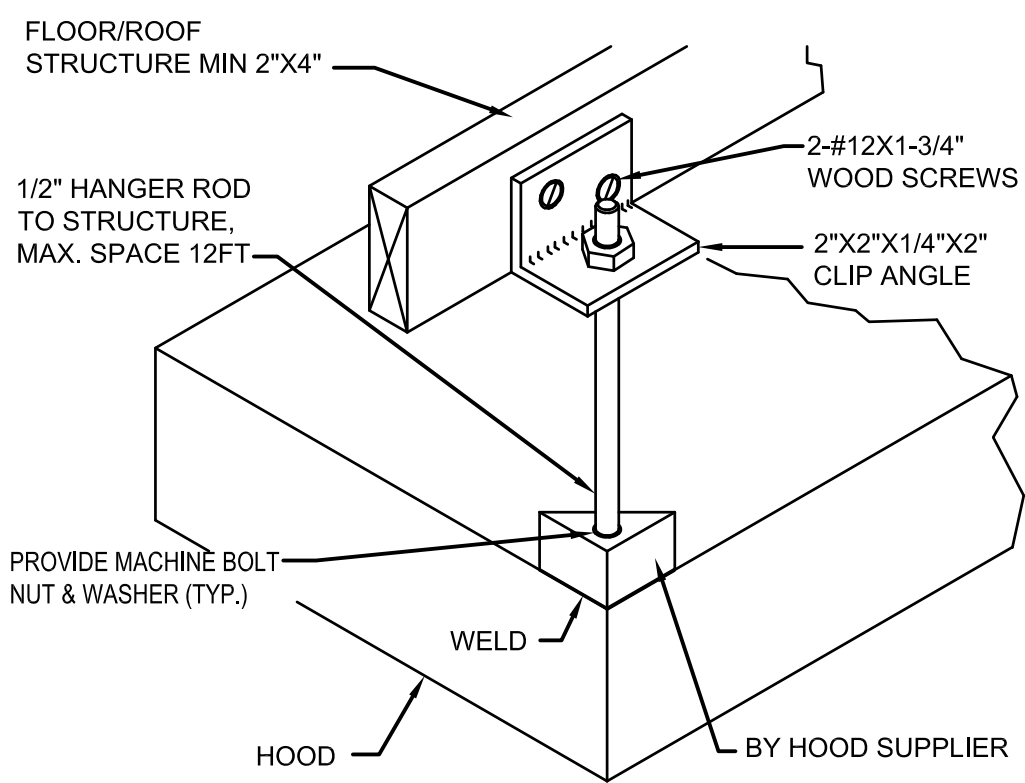
M-500



HOOD CLIP AT WALL 14

Scale: NO SCALE

M-500



HOOD SUPPORT AT TRUSS 13

Scale: NO SCALE

M-500

HOOD VENTILATION AND SECTION 5

Scale: NO SCALE

M-500

2 HOUR GREASE DUCT WRAP 1

Scale: NO SCALE

M-500



PANDA EXPRESS, INC.  
1683 Walnut Grove Ave.  
Rosemead, California  
91770

Telephone: 626.799.9898  
Facsimile: 626.372.8288

All ideas, designs, arrangement and plans indicated or represented by this drawing are the property of Panda Express Inc. and were created for use on this specific project. None of these ideas, designs, arrangements or plans may be used by or disclosed to any person, firm, or corporation without the written permission of Panda Express Inc.

REVISIONS:

ISSUE DATE:

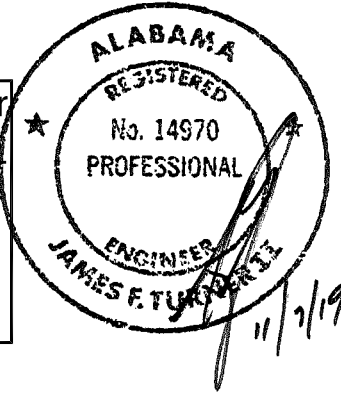
1st	DEVELOPER REVIEW	07.15.19
2nd	SITE PLAN SUBMITTAL	08.26.19
3rd	SITE COMMENTS	09.05.19
4th	ISSUE FOR PERMIT	10.01.19
5th	ISSUE FOR BID	11.07.19

DRAWN BY: PM / KL / EA

PANDA PROJECT #: S8-20-D7163

ARCH PROJECT #: 19027

James F. Turner  
Engineers, L.P.  
Consulting Engineers  
8340 Meadow Road, #160  
Dall, TX 75231  
214-750-2900  
Job #42296  
CA #CA-5874-E



Heights Venture  
ARCHITECTURE • DESIGN

HOUSTON 1111 North Loop West, Suite 800 713 889 1103 V  
DALLAS 5741 Legacy Drive, Suite 320 Plano, Texas 75024 972 490 7292 V

PANDA EXPRESS

2096 INTERSTATE DR.  
OPELIKA, AL, 36801  
3600 FSDT

TWW REMODEL

M-500

KITCHEN HOOD DETAILS

TRUE WARM & WELCOME

BID ISSUE