

PLAT OF

H. J. GOETHE COMPANY'S SUBDIVISION No 84

LOCATED IN THE

TOWN OF WASHINGTON, YOLO COUNTY,
CALIFORNIA.

SURVEYED OCTOBER 1906 J. C. BOYD, CIVIL ENGINEER.

Scale 1 inch = 30 feet

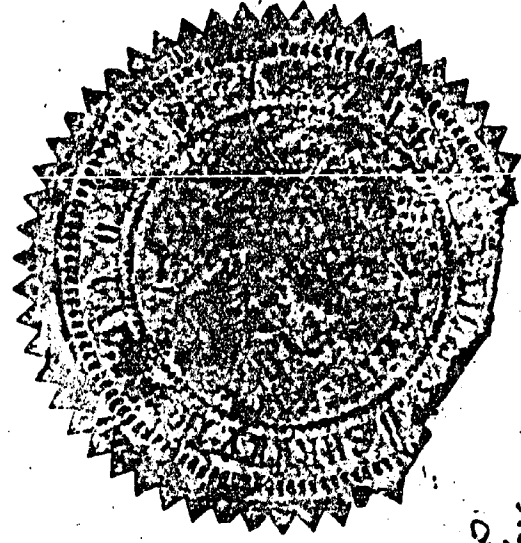
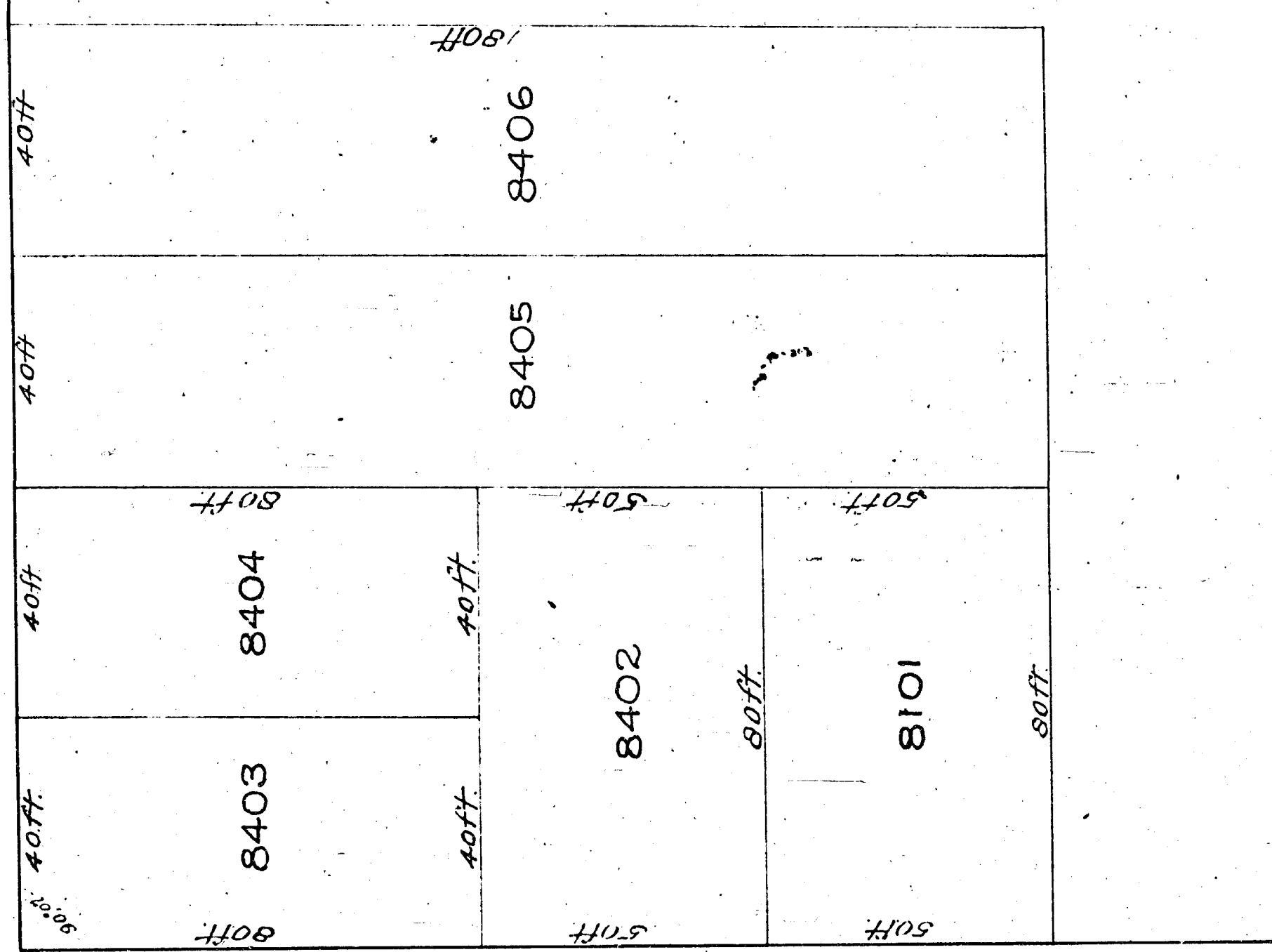
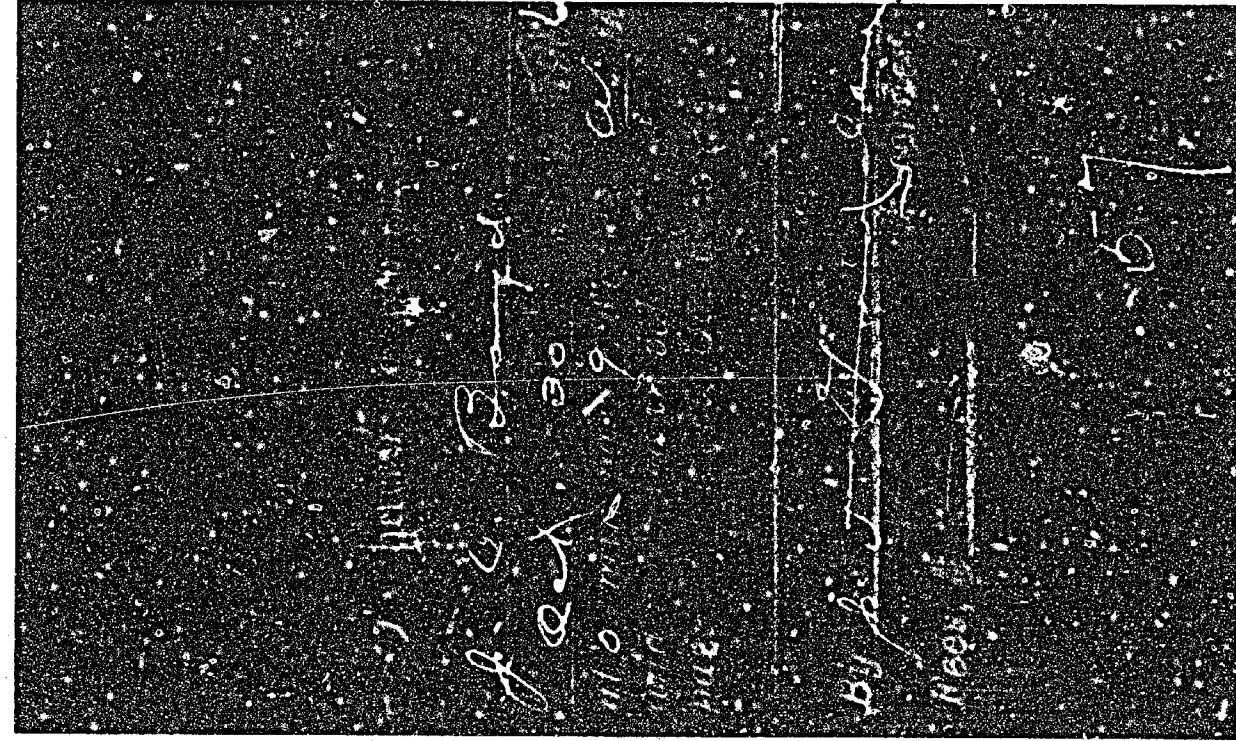
80 ft.

ELIZABETH ST.

80 ft.

80 ft.

4TH ST.



LEGEND: The land embraced within the boundaries of H. J. Goethe Company's Subdivision No 84 as hereon shown is the same land and is identical with lots numbered 15, 25, 26, 27, 28, 29, 30 and the North 1/4 of lot 14 in Block 13, as the same are shown and delineated on that certain map or plat of the Town of Washington, Yolo County, State of California, and filed in the office of the County Recorder of Yolo County on this

Elizabeth Street and 4th Street as hereon shown are identical with the same named streets as shown on the aforesaid map.

We hereby acknowledge this to be the official map of H. J. Goethe Company's Subdivision No 84, owned by us and surveyed and subdivided in accordance with our instructions.

H. J. Goethe Company
H. J. Goethe, President

State of California) ss. On this 26th day of October in the year 1906 before me, Malcolm C. Glenn, a Notary Public in and for the County of Sacramento, State of California, personally appeared H. J. Goethe, President of the H. J. Goethe Company (a corporation) known to me to be the President of the corporation that executed the within instrument and he acknowledged to me that the said corporation executed the same.

In Witness Whereof I have hereunto set my hand and affixed my official seal at my office in the County of Sacramento, State of California the day and year in the certificate first above written.

I hereby certify that this is a true and correct plat of H. J. Goethe Company's Subdivision No 84 as the same was surveyed and subdivided by me on October 1906.

J. C. Boyd
State Licensed Land Surveyor.

