

CORNER RECORD

Agency Index

BOOK 118 PAGE 56

Document Number

CR 12621

City of OAKLANDCounty of ALAMEDA, California

Brief Legal Description

CITY OF OAKLAND MONUMENT AS SHOWN UPON MONUMENT MAP 1509B490_304 AND THE MAP OF FORESTLAND (4-MAPS-52) NEAR 7205 WILD CURRANT WAY (APN 48F-7375-33).

CORNER TYPE

COORDINATES (Optional)

N. 2132322.9 ± E. 6070632.3 ±☒ ElevationUnits Metric ☐ U.S. Survey Foot ☒Horizontal Datum CCS 83Zone 3 Epoch Date

Vertical Datum

☐ Complies with Public Resources Code §§8801-8819☐ Complies with Public Resources Code §§8890-8902RANCHO
SAN
ANTONIO
(A.M. PERALTA)Government Corner ☐ Control
Meander ☐ Property
Rancho ☐ OtherDate of Survey 12/11/2018PLS Act Ref: ☐ 8765(d) ☒ 8771 ☐ 8773 ☐ Other:Corner/
Monument: ☒ Left as found ☐ Established ☐ Rebuilt ☒ Pre-Construction
☐ Found and tagged ☐ Reestablished ☒ Referenced ☐ Post-Construction

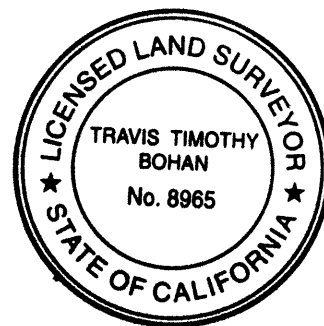
Narrative of corner identified and monument as found, set, reset, replaced, or removed:

☒ See sheet #2 for description (s):

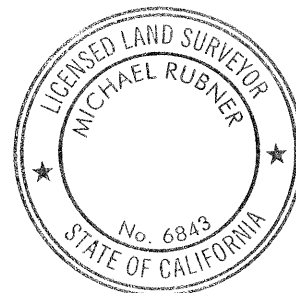
FOUND MONUMENT THAT COULD BE DAMAGED OR DESTROYED BY A PROPOSED GAS LINE CONSTRUCTION PROJECT. MONUMENT WAS REFERENCED AS SHOWN ON PAGE 2 OF 2.

THE PURPOSE OF THIS CORNER RECORD IS TO PRESERVE THE LOCATION OF THE MONUMENT PRIOR TO CONSTRUCTION. NO ATTEMPT WAS MADE TO DETERMINE THE RELATIONSHIP BETWEEN THE MONUMENT AND PROPERTY LINES, RIGHT-OF-WAY LINES, CENTERLINES OR OTHER MONUMENTS.

SURVEYOR'S STATEMENT

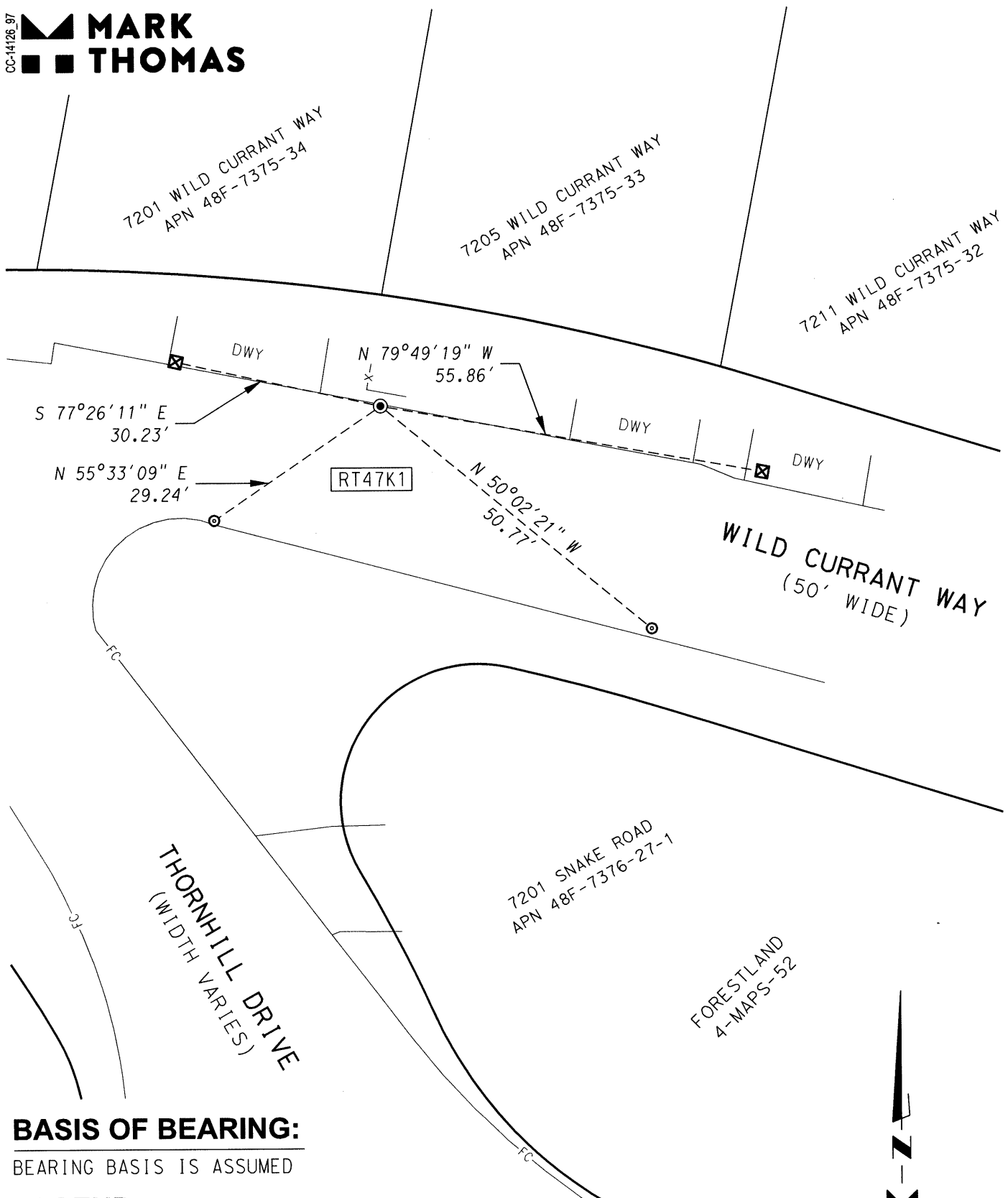
This Corner Record was prepared by me or under my direction in conformance with the Professional Land Surveyors' Act on FEBRUARY 18, 2019Signed Travis Timothy Bohan P.L.S. or R.C.E. No. 8965

COUNTY SURVEYOR'S STATEMENT

This Corner Record was received 9 JANUARY 2019and examined and filed 11 MARCH 2019Signed Michael Rubner P.L.S. or R.C.E. No. 6843Title COUNTY SURVEYOR

County Surveyor's Comment

CC-14126.97


**MARK
THOMAS**
**BASIS OF BEARING:**

BEARING BASIS IS ASSUMED

LEGEND:

- FOUND CONCRETE MONUMENT WITH PIN IN WELL
- ⊠ SET CUT CROSS ON CONCRETE FOR REFERENCE POINT
- ⊙ SET MAG NAIL AND SHINER IN A.C. FOR REFERENCE POINT
- RT47K1 ALAMEDA COUNTY MONUMENT IDENTIFICATION NUMBER

SCALE: 1" = 20'



0' 10' 20'