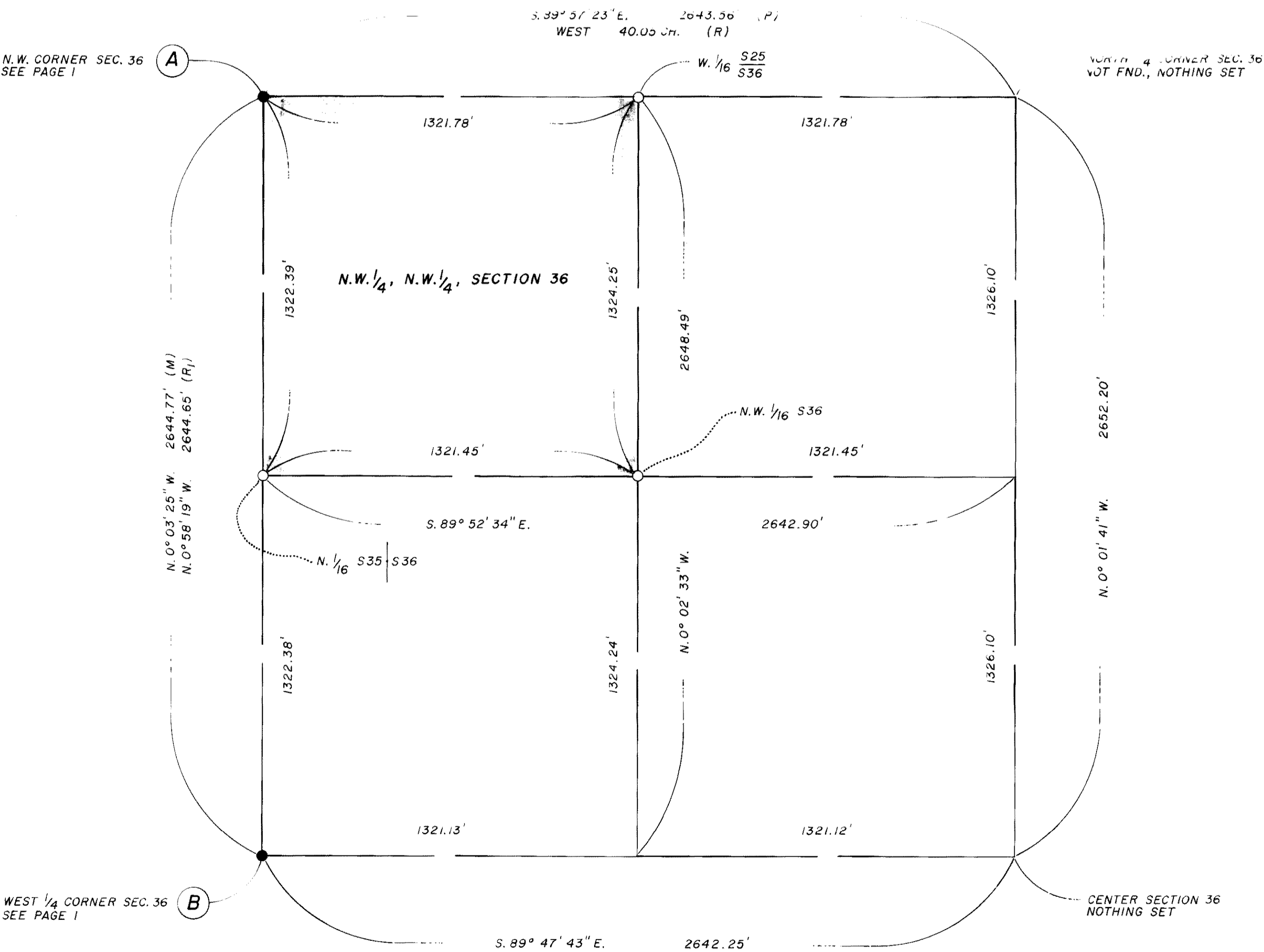


RECORD OF SURVEY NO. 34-22
BEING A SURVEY OF THE N.W. 1/4 OF THE N.W. 1/4
OF SECTION 36, T.1N., R.26E., M.D.B. & M., MONO COUNTY, CALIFORNIA
"PUMICE VALLEY LANDFILL SITE"

- LEGEND:
- FOUND POINT AS NOTED
 - SET 2" IRON PIPE AND TAG, "MONO COUNTY SURVEYOR" IN ROCK MOUND
 - M MEASURED
 - P PROPORTIONED FROM RECORD INFORMATION
 - R RECORD INFORMATION FROM 1855-1856 SURVEY OF A.W. VONSCHMIDT, FIELD NOTES #103-1
 - R₁ RECORD INFORMATION PER CITY OF LOS ANGELES DEPT. OF WATER AND POWER RECORD OF SURVEY RECORDED IN R.S.M.B. 1 PAGES 24, 24A, 24B, IN THE OFFICE OF THE MONO COUNTY RECORDER



R/S Vol. 2 Page 11 A