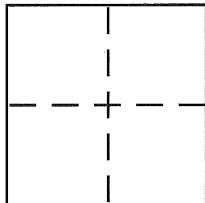


**CORNER RECORD**  
**BERKELEY**

Document Number CR 5002  
County of ALAMEDA, California

City of \_\_\_\_\_

Brief Legal Description CITY MONUMENT B0102



**CORNER TYPE**

Government Corner ☐ Control ☒  
Meander ☐ Property ☐  
Rancho ☐ Other ☐  
Date of Survey MAY 7, 2012

**COORDINATES (Optional)**

N. \_\_\_\_\_  
E. \_\_\_\_\_  
Zone \_\_\_\_\_ NAD27 ☐ NAD83 ☐  
NAD83 Epoch \_\_\_\_\_  
Elev. \_\_\_\_\_  
Vert. Datum: NGVD29 ☐ NAVD88 ☐  
Meas. Units: Metric ☐ Imperial ☐

Corner – Left as found ☒ Found and tagged ☐ Established ☐ Reestablished ☐ Rebuilt ☐

Identification and type of corner found: Evidence used to identify or procedure used to establish or reestablish the corner:  
SEE OTHER SIDE

In compliance with Section 8771 of the Professional Land Surveyors' Act, this corner record is being filed to ESTABLISH the position of an existing monument PRIOR to street or highway construction.

A description of the physical condition of the monument as found and as set or reset: \_\_\_\_\_

SEE OTHER SIDE

**SURVEYOR'S STATEMENT**

This Corner Record was prepared by me or under my direction in conformance with the Land Surveyor's Act on MAY 30 2012.  
Signed Robert J. Brunel P.L.S. or R.C.E. No. 4961



**COUNTY SURVEYOR'S STATEMENT**

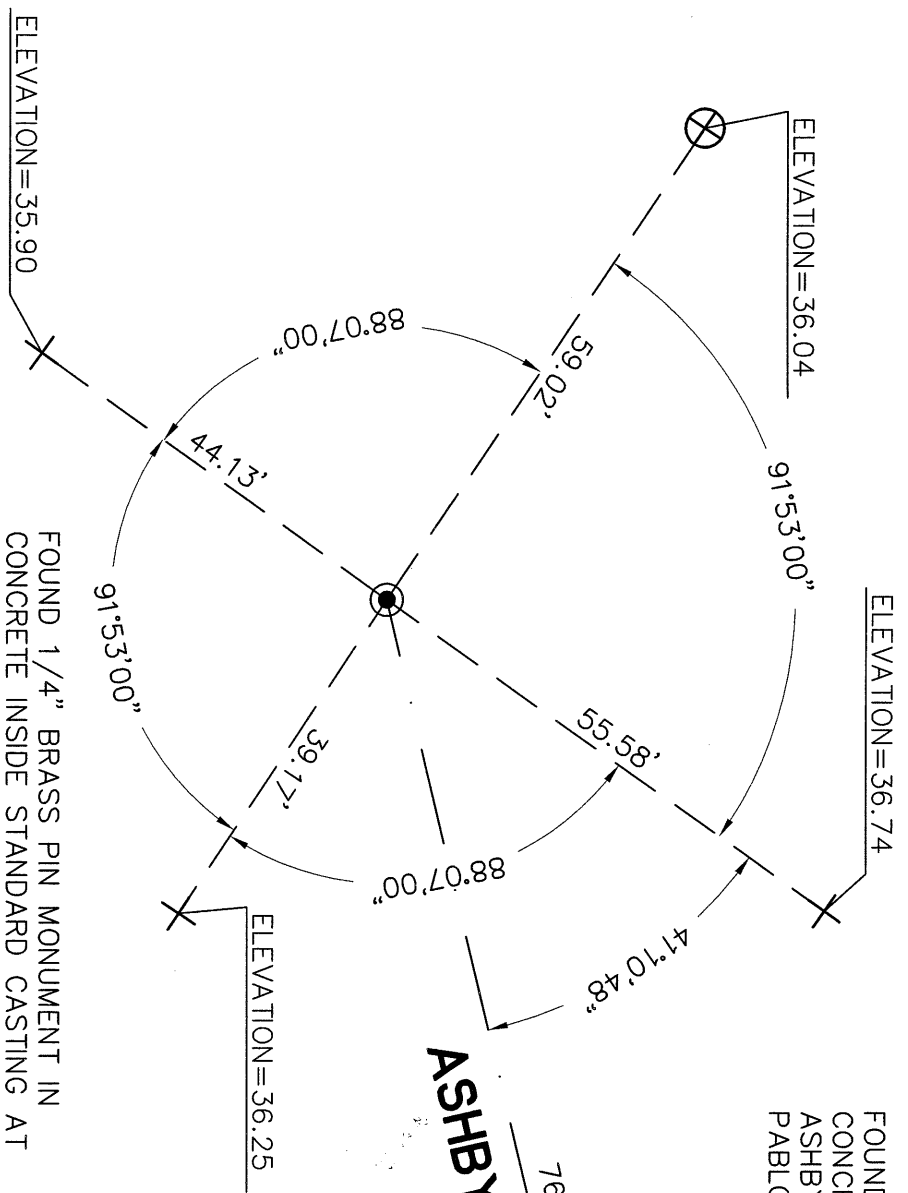
This Corner Record was received 6-6-2012  
and examined and filed 9-26-2012  
Signed Russell R. Penland P.L.S. or R.C.E. No. 5726  
Title COUNTY SURVEYOR



County Surveyor's Comment \_\_\_\_\_

FOUND 2 1/8" BRASS DISC WITH PUNCH IN  
CONCRETE INSIDE STANDARD CASTING AT  
ASHBY AVENUE AND THE WEST SIDE OF SAN  
PABLO AVENUE. #B0103

VB23D6



FOUND 1/4" BRASS PIN MONUMENT IN  
CONCRETE INSIDE STANDARD CASTING AT  
ASHBY AVENUE AND 9TH STREET. #B0102  
ELEVATION=35.32

FX35F6

**LEGEND**

- FOUND CITY MONUMENT AS NOTED
- ▲ FOUND CALTRANS MONUMENT AS NOTED
- + CUT CROSS IN CONCRETE CURB
- ⊕ CUT CROSS IN CONCRETE SIDEWALK
- AA##A# ALAMEDA COUNTY MONUMENT ID

**CORNER RECORD**

TO REFERENCE MONUMENT B0102  
AT ASHBY AVENUE AND 9TH STREET  
CITY OF BERKELEY, COUNTY OF ALAMEDA, CALIFORNIA  
MAY 7, 2012 SCALE: 1"=20'