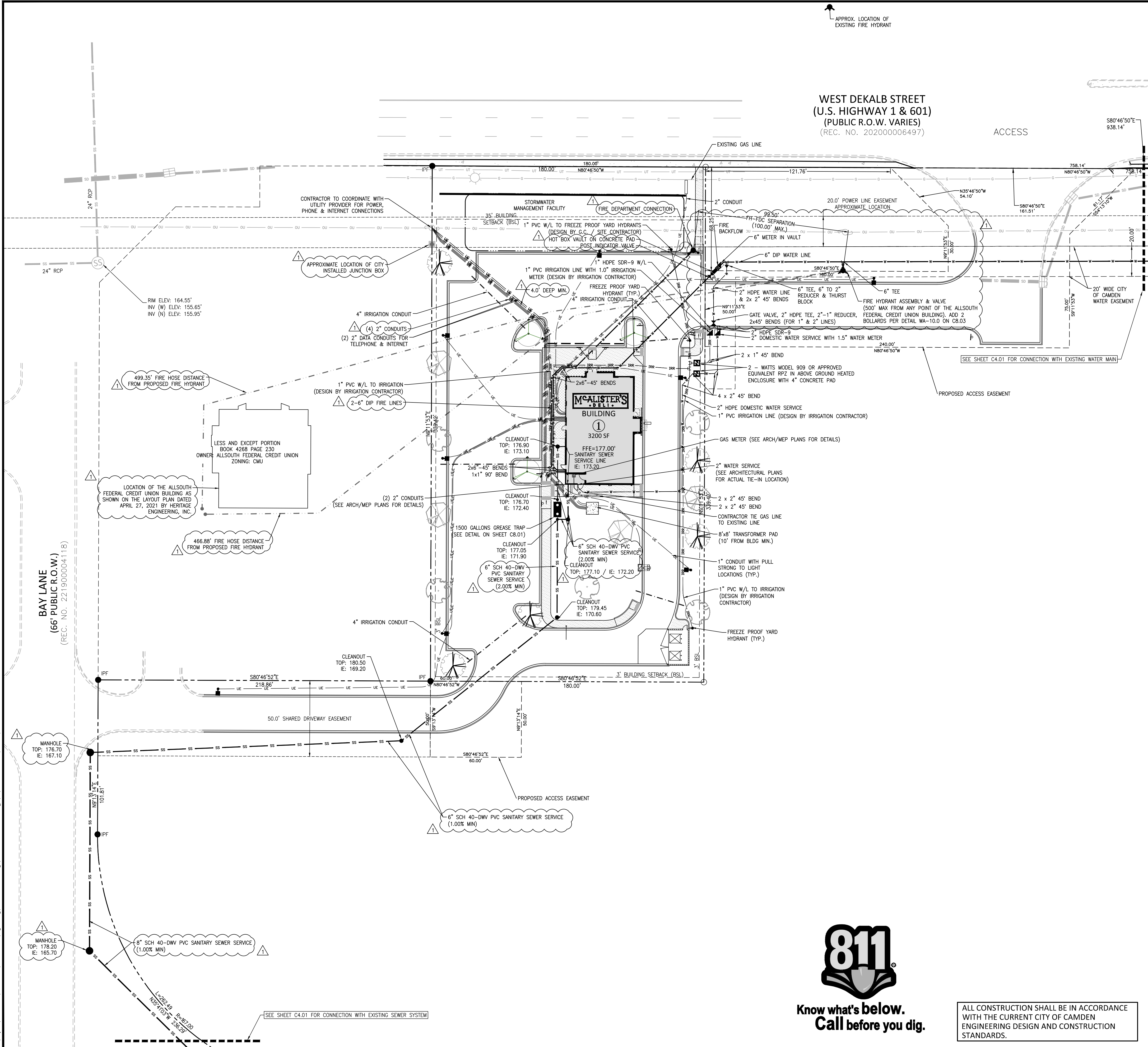


M:\Projects\CGBuchalter\2020110347\04-Production\Engineering\Construction Drawings\CGB2020110347X-SITE.dwg, 8/17/2021, 11:31:09 AM, McAdams, Lauren



UTILITY LEGEND

- FIRE HYDRANT ASSEMBLY
- FIRE DEPARTMENT CONNECTION (FDC)
- WATER METER
- WATER VALVE
- METER & VAULT
- REDUCER
- SEWER CLEAN-OUT
- GREASE TRAP
- SEWER FLOW DIRECTION ARROW
- LINE BREAK SYMBOL
- WATERLINE
- WATER SERVICE LINE
- UTILITY SLEEVE
- SANITARY SEWER
- SEWER SERVICE LINE
- SEWER FORCE MAIN
- GAS LINE
- OVERHEAD UTILITY
- UNDERGROUND ELECTRIC
- TELEPHONE
- EASEMENT LINE

CITY OF CAMDEN PUBLIC UTILITIES STANDARD UTILITY NOTES:

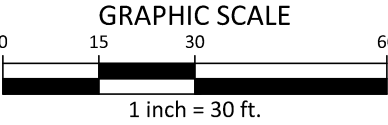
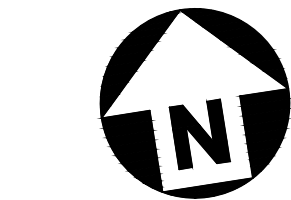
1. ALL MATERIALS & CONSTRUCTION METHODS SHALL BE IN ACCORDANCE WITH CITY OF CAMDEN DESIGN STANDARDS, DETAILS & SPECIFICATIONS.
2. CITY WILL TAKE OWNERSHIP OF SEWER AT FIRST MANHOLE ON BAY LANE. CITY OWNERSHIP OF WATER MAIN IS AT THE WATER METER. MCALISTER'S TO OWN AND MAINTAIN BACKFLOW DEVICE.

ADDITIONAL UTILITY NOTES:

1. ALL WATER MAINS, SERVICES AND FIRE SERVICES GREATER THAN 2" DIAMETER ARE TO BE DUCTILE IRON PIPE. 2" & SMALLER DOMESTIC SERVICES MUST BE CTS (WITHOUT FITTINGS) TO THE WATER METER.
2. ALL SEWER MAINS SHALL BE EITHER PVC OR DUCTILE IRON PIPE AS SHOWN ON THE PLANS. ALL PIPE MATERIAL SHALL MEET CITY OF CAMDEN STANDARDS AND SPECIFICATIONS AS DEFINED IN THE LATEST ISSUE OF THE PUBLIC UTILITIES HANDBOOK AND/OR UNIFIED DEVELOPMENT ORDINANCE (UDO).
3. ALL FIRE HYDRANTS ALONG PUBLIC R/W LINES SHALL HAVE A 5'X5' CITY OF CAMDEN WATERLINE EASEMENT ONTO ADJACENT PROPERTY.
4. ALL SANITARY SEWER INTERCEPTOR LINES (12" AND LARGER), AS WELL AS MANHOLES AND FITTINGS ASSOCIATED WITH THE INTERCEPTOR LINE, SHALL BE INTERNALLY LINED WITH PROTECTO 401 OR APPROVED EQUAL TO PREVENT HYDROGEN SULFIDE CORROSION. SEE THE CURRENT CITY OF CAMDEN PUBLIC UTILITIES DEPARTMENT HANDBOOK FOR APPROVED COATINGS AND APPLICATION METHODS.
5. ALL UNDERGROUND UTILITIES INSTALLED SHALL BE ELECTRONICALLY LOCATABLE. CONTRACTOR SHALL COORDINATE DIRECTLY WITH THE CITY OF CAMDEN PUBLIC UTILITIES DEPARTMENT FOR DETAILS AND SPECIFICATIONS FOR MEETING THESE REQUIREMENTS.
6. EXISTING UTILITIES SHOWN ARE BASED ON FIELD SURVEYS AND THE BEST AVAILABLE RECORD DRAWINGS. THE CONTRACTOR SHALL VERIFY CONDITIONS PRIOR TO BEGINNING CONSTRUCTION. ANY DISCREPANCIES BETWEEN ACTUAL FIELD CONDITIONS AND THE PLANS SHALL BE REPORTED TO THE ENGINEER IMMEDIATELY.
7. ALL WATER AND SEWER MAINS WITHIN PUBLIC EASEMENTS OR RIGHTS-OF-WAY TO BE OWNED, OPERATED, AND MAINTAINED BY CITY OF CAMDEN.
8. ALL WATER AND SEWER MAINS NOT WITHIN PUBLIC EASEMENTS OR RIGHTS-OF-WAY TO BE PRIVATELY OWNED, OPERATED, AND MAINTAINED BY THE PROPERTY OWNER.
9. CONTRACTOR SHALL NOTIFY "SC811" (811) OR (1-803-939-1117) AT LEAST 3 FULL BUSINESS DAYS PRIOR TO BEGINNING CONSTRUCTION OR EXCAVATION TO HAVE EXISTING UTILITIES LOCATED. CONTRACTOR SHALL CONTACT ANY LOCAL UTILITIES THAT PROVIDE THEIR OWN LOCATOR SERVICES INDEPENDENT OF "SC811". REPORT ANY DISCREPANCIES TO THE ENGINEER IMMEDIATELY.
10. ALL UTILITY SLEEVES SHALL BE SCHEDULE 40 PVC AND INSTALLED WITH 2' MINIMUM COVER. BOTH ENDS SHALL BE CAPPED AND MARKED.

UTILITY CONTACTS:

- WATER & SANITARY SEWER
CITY OF CAMDEN WATER & SEWER
CONTACT: JAMES RAY
ADDRESS: 1000 LYTLETON STREET, CAMDEN, SC 29020
PHONE: 803-425-6045
- ELECTRIC
CITY OF CAMDEN ELECTRIC UTILITY
CONTACT: CHRIS CARTER
PHONE: 803-425-6045
- GAS
DOMINION ENERGY
CONTACT: RALPH HARWARD
PHONE: 843-250-5527
- PHONE/INTERNET
AT&T
CONTACT: CINDY CRIPPS
PHONE: 803-401-2566



PRELIMINARY DRAWING - NOT RELEASED FOR CONSTRUCTION



McADAMS

The John R. McAdams Company, Inc.
2905 Meridian Parkway
Durham, NC 27713

phone 919. 361. 5000
fax 919. 361. 2269
license number: 552

www.mcadamsco.com

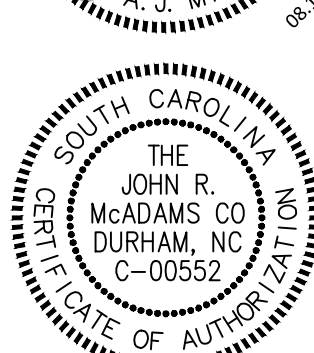
CLIENT

CAPITAL GROWTH BUCHALTER
361 SUMMIT BLVD, STE 100
BIRMINGHAM, AL 35243
PHONE: 205. 263. 4589



MCALISTER'S DELI - DEKALB ST
SITE DEVELOPMENT PLANS
2117 WEST DEKALB ST
CAMDEN, SOUTH CAROLINA, 29020

LAUREN A. J. MCADAMS
Professional Engineer
No. 38746
SOUTH CAROLINA
08-16-21



REVISIONS

NO.	DATE	REVISION DESCRIPTION
1	08.16.2021	REVISED PER CITY COMMENTS
2	-	-
3	-	-
4	-	-
5	-	-
6	-	-

PLAN INFORMATION

PROJECT NO. CGB-2020110347
FILENAME CGB2020110347X-SITE
CHECKED BY SW
DRAWN BY LAM
SCALE 1" = 30'
DATE 05.19.2021

SHEET

UTILITY PLAN

C4.00



Know what's below.
Call before you dig.

ALL CONSTRUCTION SHALL BE IN ACCORDANCE
WITH THE CURRENT CITY OF CAMDEN
ENGINEERING DESIGN AND CONSTRUCTION
STANDARDS.