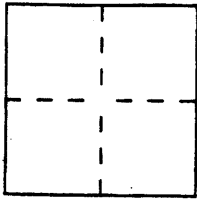


CORNER RECORD

98-053 7 Cr 031

Document Number CR 848City of OAKLANDCounty of ALAMEDA, CaliforniaBrief Legal Description LOTS 3, BLOCK C, CLAREMONT PINES, BK . 12 MAPS PG. 77

CORNER TYPE

Government Corner ☐ Control ☐
Meander ☐ Property ☒
Rancho ☐ Other ☐
Date of Survey JAN. 22, 1997

COORDINATES (Optional)

N. _____
E. _____
Zone _____ Datum _____
Elev. _____

Corner — Left as found ☐ Found and tagged ☐ Established ☒ Reestablished ☐ Rebuilt ☐

Identification and type of corner found: Evidence used to identify or procedure used to establish or reestablish the corner:
REESTABLISH FROM RECORD DATA AND FOUND MONUMENTS
AS SHOWN ON THE ABOVE NAMED MAP; SEE SKETCH ON BACK.

A description of the physical condition of the monument as found and as set or reset: _____

- ☒ FOUND WELL MONUMENT PER 12 M 77
☐ SET 1" I.P. TAGGED PLASTIC PLUG, R.C.E. 31570, UP 0.1"
☒ FOUND CHISELED "+" ON TOP OF CURB

SURVEYOR'S STATEMENT

This Corner Record was prepared by me or under my direction in conformance with
the Land Surveyors' Act on JANUARY 22 1997.

Signed [Signature] R.C.E. Number 31570

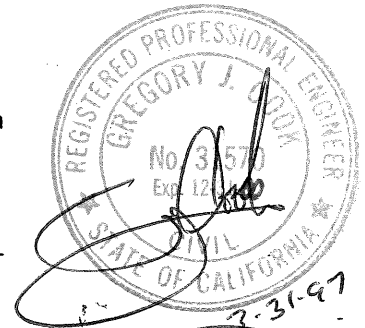
COUNTY SURVEYOR'S STATEMENT

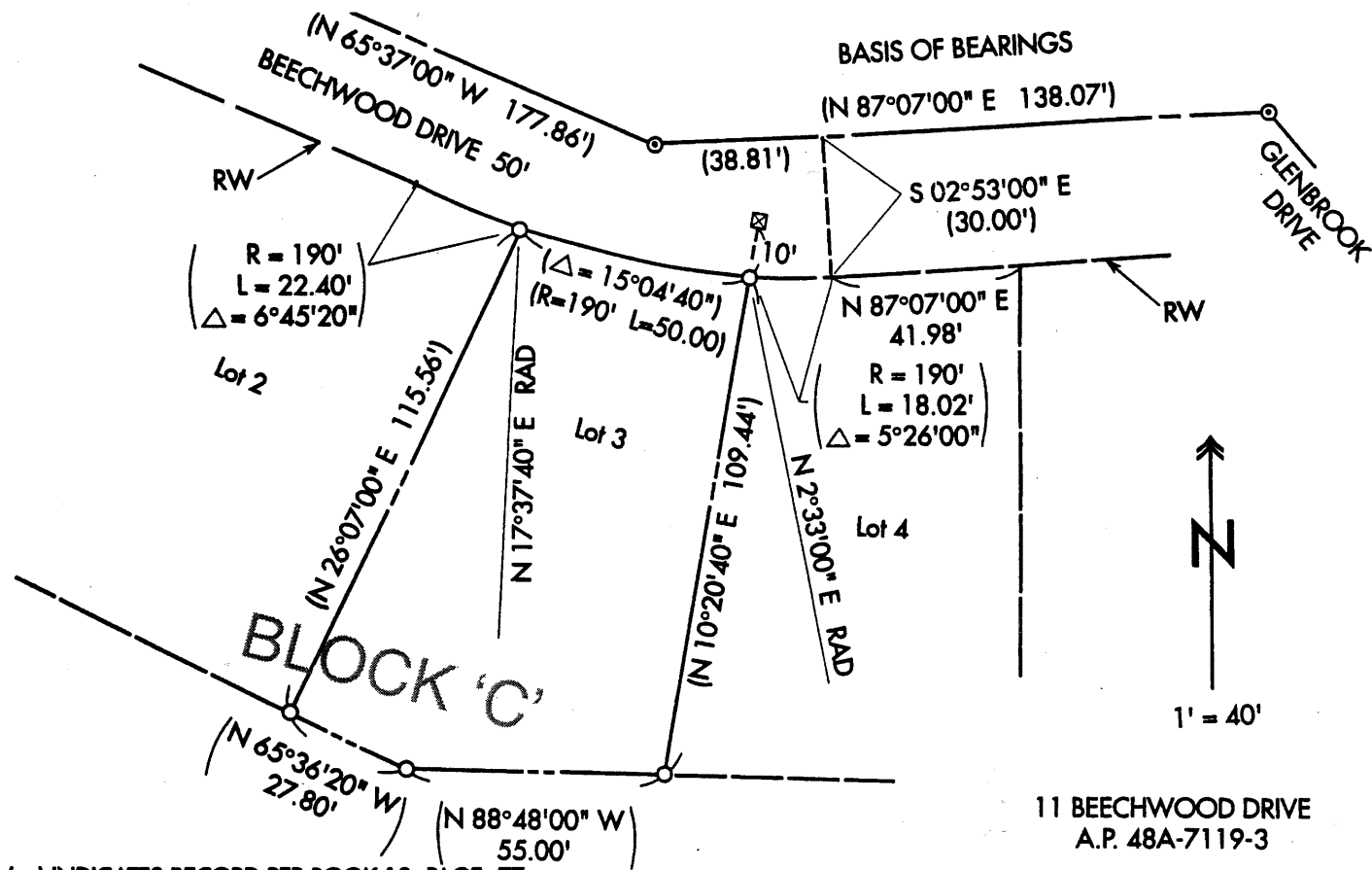
This Corner Record was received 3/06/1 1997 and examined

and filed 4-17-1 1997

Signed Russell R. Penland Title DEPUTY COUNTY SURVEYOR

County Surveyor's Comment _____





() INDICATES RECORD PER BOOK 12 PAGE 77

11 BEECHWOOD DRIVE
A.P. 48A-7119-3

848