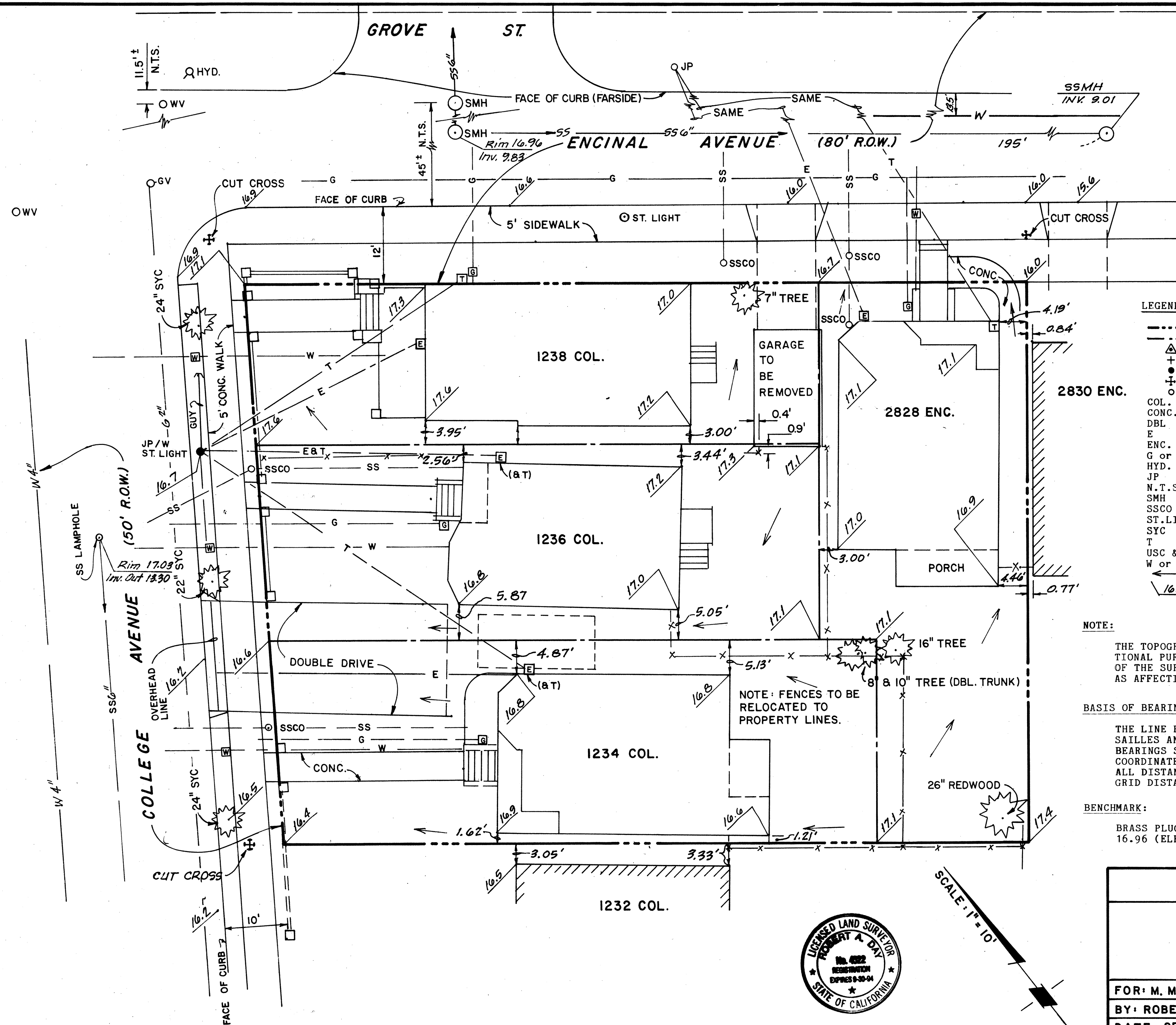


Parcel Map 6629 Map BK 221 PP 90



- LEGEND & ABBREVIATIONS**
- EXTERIOR BOUNDARY
 - - - INTERIOR LOT LINES
 - △ FOUND USC & GS MONUMENTS
 - + FOUND CROSS
 - FOUND IRON PIPE
 - ⊕ CUT CROSS IN CONCRETE
 - SET IRON PIPE (w/LLS TAG #4522)
 - COL. COLLEGE (AVENUE)
 - CONC. CONCRETE
 - DBL. DOUBLE (TRUNKED TREE)
 - E ELECTRIC LINE, METER, BOX OR POINT OF SERVICE
 - ENC. ENCINAL (AVENUE)
 - G or GV GAS LINE, VALVE, METER OR POINT OF SERVICE
 - HYD. (FIRE) HYDRANT
 - JP JOINT SERVICE POWER, (LIGHT) & TELEPHONE POLE
 - N.T.S. NOT TO SCALE
 - SMH SANITARY SEWER MANHOLE
 - SSCO SAN. SEWER CLEAN OUT
 - ST. LIGHT STREET LIGHT or ELECTROLIER
 - SYC SYCAMORE TREE
 - T TELEPHONE LINE, PULL BOX OR POINT OF SERVICE
 - USC & GS U.S. COAST & GEODETIC SURVEY (MONUMENT)
 - W or WV WATER LINE, VALVE, METER OR POINT OF SERVICE
 - DIRECTIONAL FLOW OF SURFACE DRAINAGE
 - 16.5 SPOT ELEVATIONS (ALAMEDA DATUM) AT GROUND'S SURFACE (UNLESS OTHERWISE NOTED)

NOTE:
THE TOPOGRAPHIC DATA REFLECTED ON THIS SHEET IS FOR INFORMATIONAL PURPOSES ONLY, DESCRIBING THE CONDITIONS AT THE TIME OF THE SURVEY AND IS NEITHER INTENDED NOR TO BE CONSTRUED AS AFFECTING RECORDED TITLE INTEREST.

BASIS OF BEARINGS:
THE LINE BETWEEN U.S.C. & G.S. MONUMENT ENCINAL-VERSAILLES AND ENCINAL-MOUND TAKEN AS S 47° 43' 56" E. BEARINGS SHOWN HEREON ARE BASED UPON THE CALIFORNIA COORDINATE SYSTEM, ZONE 3.
ALL DISTANCES SHOWN ARE GROUND DISTANCES; TO OBTAIN GRID DISTANCES, DIVIDE DISTANCES SHOWN BY 1.000072.

BENCHMARK:
BRASS PLUG IN NORTHWEST RETURN OF GROVE & ENCINAL, ELEV. = 16.96 (ELEVATIONS ARE RELATIVE TO CITY OF ALAMEDA DATUM)

PARCEL MAP 6629		
A DIVISION OF THE PROPERTY AT THE SOUTHEAST CORNER OF COLLEGE & ENCINAL AVENUES ALAMEDA, CALIFORNIA		
FOR: M. McMAHON, WM. L. & KELLY H. HUBER		
BY: ROBERT A. DAY, LAND SURVEYING		
DATE: SEPT. 1993	SCALE: 1" = 10'	SHEET 2 OF 2

BK 221 P. 90