

COMPONENTS AND CLADDING
DESIGN WINDLOAD PRESSURE (ULT)
PRESSURES ARE BASED ON 10 SQ FT AREA

- ROOF
① +12 psf
-29 psf
② +12 psf
-49 psf
③ +12 psf
-49 psf

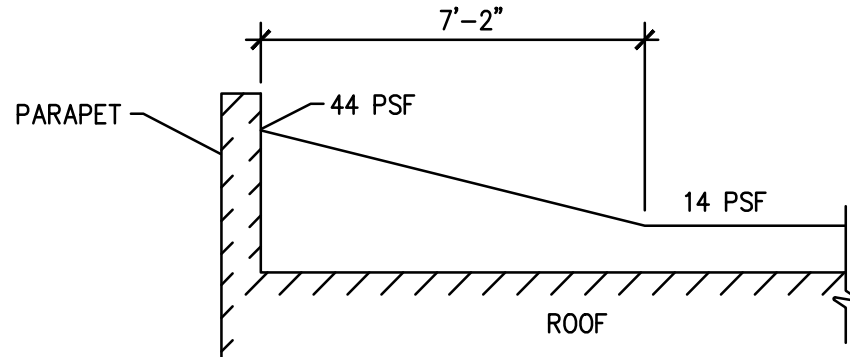
- WALLS
④ +29 psf
-31 psf
⑤ +29 psf
-39 psf

OVERHANG
-46 psf (UPLIFT)

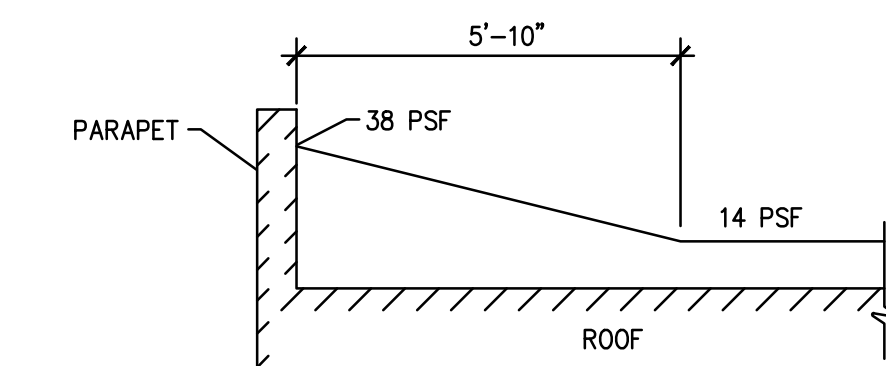
PLUS AND MINUS SIGNS INDICATE
PRESSURES ACTING TOWARD AND
AWAY FROM SURFACES, RESPECTIVELY

WALL PRESSURE (ULT) (PER ASCE7-10 CHAPTER 27 PART 1)		WINDWARD		LEEWARD	
0'-15'		18.6 PSF	10.4 PSF		
20.0'		17.6 PSF	10.4 PSF		

WIND NET UPLIFT (ASD) (PSF)			
ROOF DECK		ROOF TRUSSES	
TYPICAL	W/IN 4.0' OF PERIMETER	TYPICAL	W/IN 4.0' OF PERIMETER
19	29	12	15



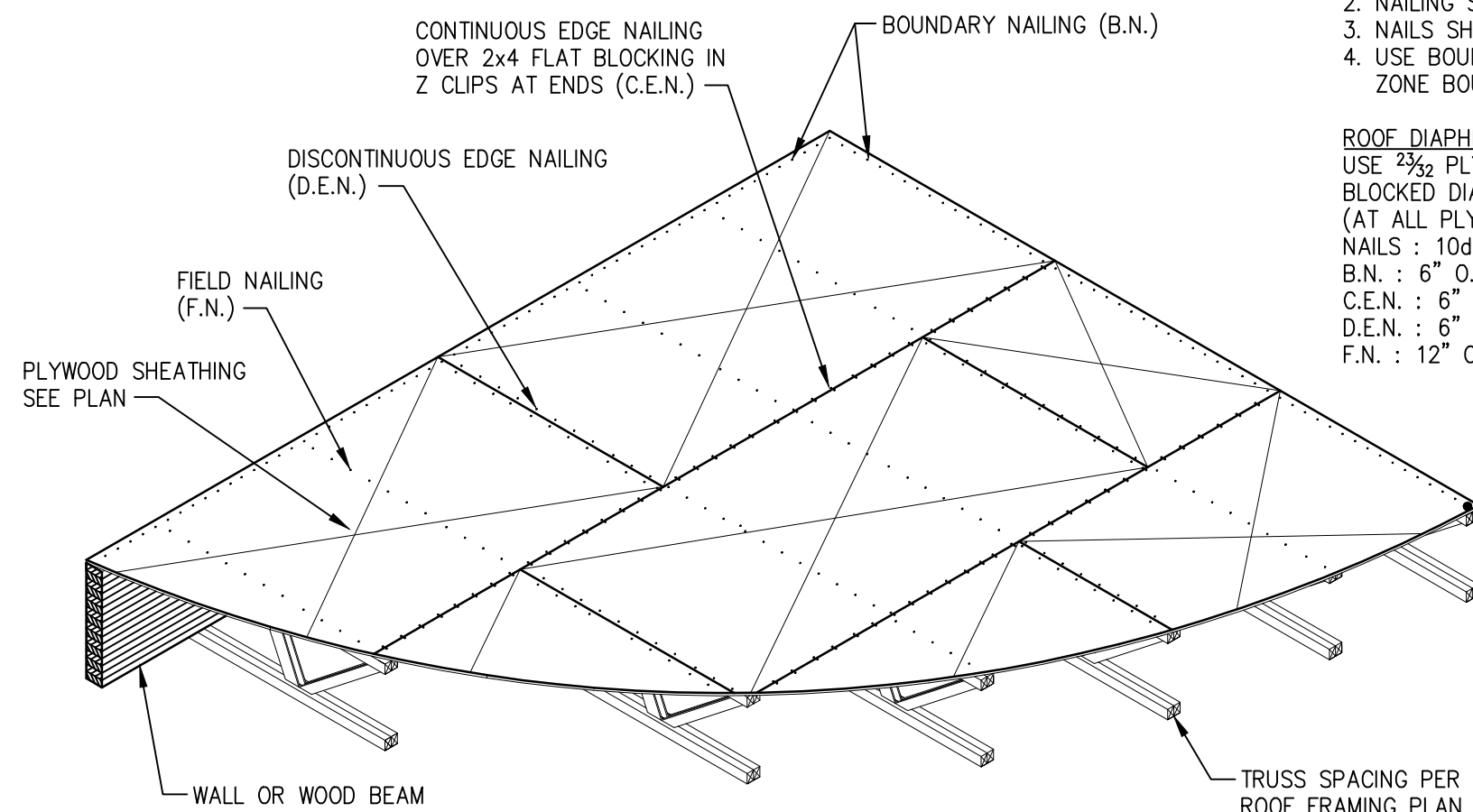
SNOW DRIFT AT BLDG END WALL
PERPENDICULAR TO TRUSSES



SNOW DRIFT AT EACH END OF TRUSSES

TYPICAL LOAD DIAGRAM DETAIL 3

S-101

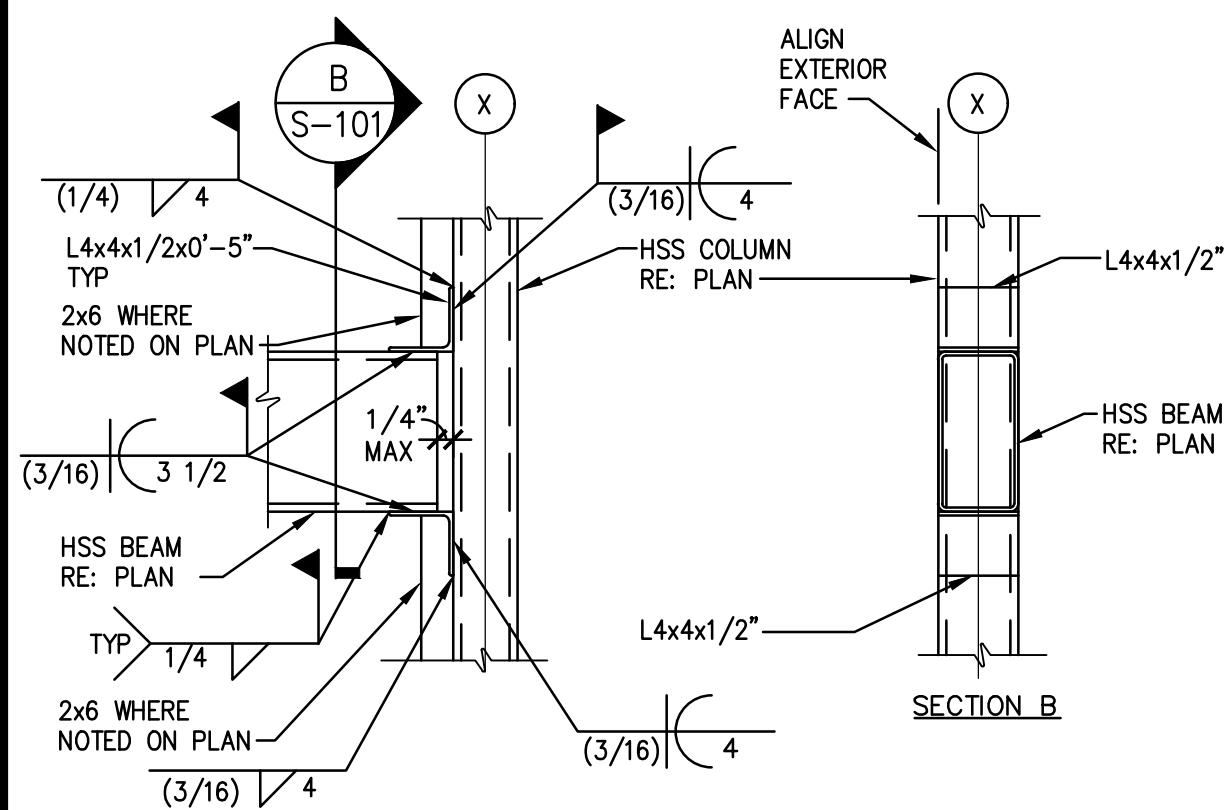


- NOTES:
1. RUN LONG DIMENSION OF PLYWOOD PERPENDICULAR TO TRUSSES.
2. NAILING SIZE AND SPACING AS NOTED ON PLAN.
3. NAILS SHALL HAVE A MIN. 3/4" EDGE DISTANCE.
4. USE BOUNDARY NAILING CONTINUOUS @ ALL NAILING ZONE BOUNDARIES. SEE PLAN FOR ZONE EXTENTS.

ROOF DIAPHRAGM
USE 3/4" PLYWOOD, INDEX 48/24
BLOCKED DIAPHRAGM 2x4 FLAT IN Z CLIP
(AT ALL PLYWOOD EDGES, TYP. U.N.O.)
NAILS : 10d COMMON NAILS
B.N. : 6" O.C.
C.E.N. : 6" O.C.
D.E.N. : 6" O.C.
F.N. : 12" O.C.

TYPICAL ROOF DIAPHRAGM DETAIL 2

S-101



HSS BEAM TO COL CONN 4

SCALE: 1"=1'-0"

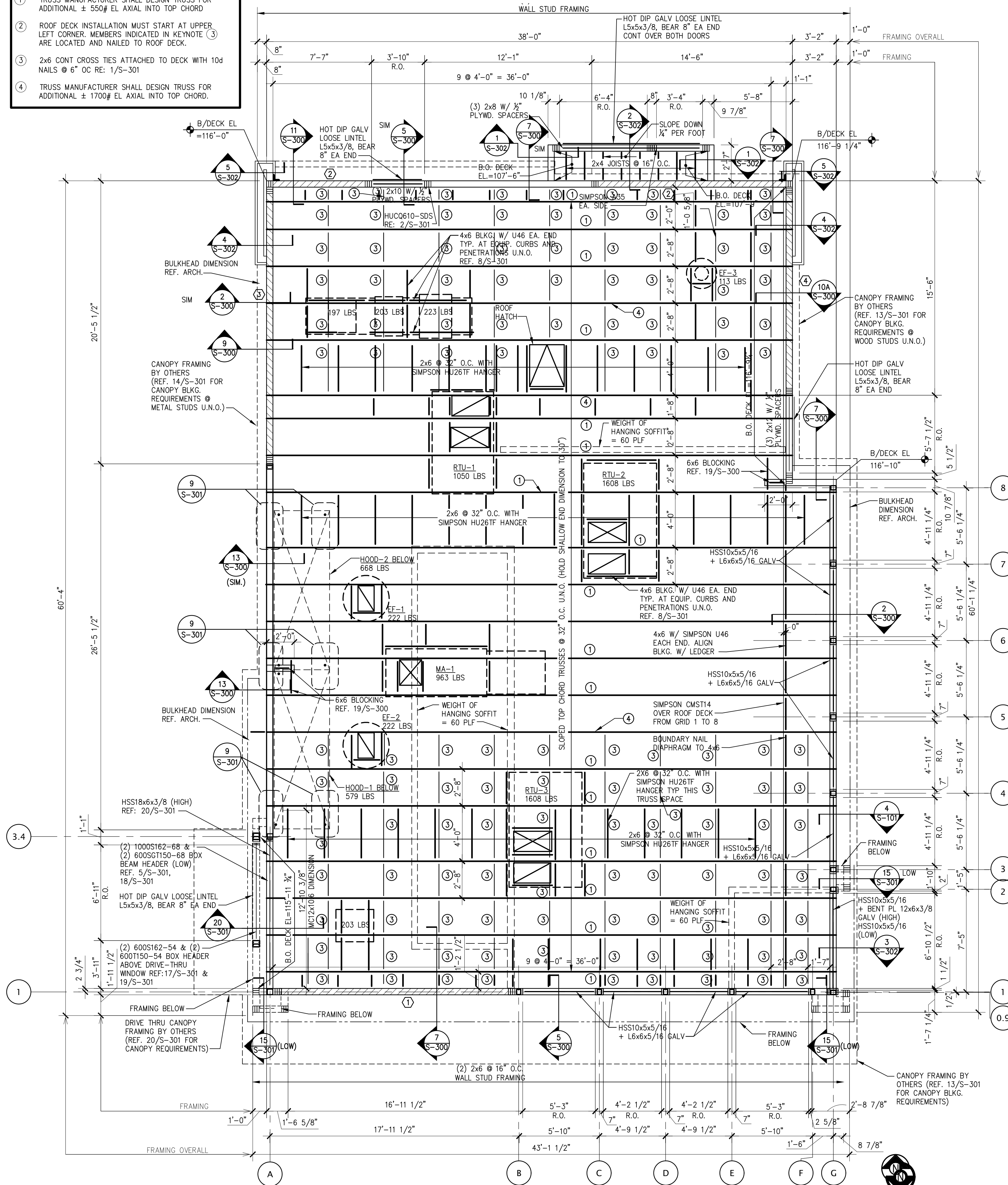
S-101

TYPICAL ROOF NOTES 1

S-101

KEYNOTES:

- TRUSS MANUFACTURER SHALL DESIGN TRUSS FOR ADDITIONAL $\pm 550\#$ EL AXIAL INTO TOP CHORD
- ROOF DECK INSTALLATION MUST START AT UPPER LEFT CORNER. MEMBERS INDICATED IN KEYNOTE ③ ARE LOCATED AND NAILED TO ROOF DECK.
- 2x6 CONT CROSS TIES ATTACHED TO DECK WITH 10d NAILS @ 6" OC RE: 1/S-301
- TRUSS MANUFACTURER SHALL DESIGN TRUSS FOR ADDITIONAL $\pm 1700\#$ EL AXIAL INTO TOP CHORD.



TYPICAL ROOF FRAMING PLAN A

S-101



PANDA EXPRESS, INC.
1683 Walnut Grove Ave.
Rosemead, California
91770

Telephone: 626.799.9898
Facsimile: 626.372.8288

All ideas, designs, arrangement and plans indicated or represented by this drawing are the property of Panda Express Inc. and were created for use on this specific project. None of these ideas, designs, arrangements or plans may be used by or disclosed to any person, firm, or corporation without the written permission of Panda Express Inc.

REVISIONS:

NO.	DESCRIPTION	DATE

ISSUE DATE:

STATE PERMIT SET 02/10/2021

DRAWN BY: DWG

PANDA PROJECT #: D8059

ARCH PROJECT #: JCDT20-0255



NORR
ARCHITECTS PLANNERS

PANDA EXPRESS

TRUE WARM & WELCOME
1395 N. GREEN STREET
BROWNSBURG, IN 46112

S-101

ROOF FRAMING PLAN