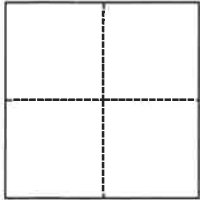


CORNER RECORD

Agency Index BK 140 PG 66
Document Number CR 15387

City of Oakland (APN 29-1070-44) County of Alameda, California
Brief Legal Description Monument in Norton Avenue, near 4012 Norton Avenue

CORNER TYPE



☐ Government Corner ☒ Control
☐ Meander ☐ Property
☐ Rancho ☐ Other

Date of Survey May 27, 2021

COORDINATES (Optional)

N. E.

Elevation

Units ☐ Metric ☒ U.S. Survey Foot

Horizontal Datum

Zone Epoch Date

Vertical Datum

☐ Complies with Public Resources Code §§8801-8819

☐ Complies with Public Resources Code §§8890-8902

PLS Act Ref.: ☐ 8765(d) ☒ 8771 ☐ 8773 ☐ Other:

Corner/
Monument: ☒ Left as found ☐ Established ☐ Rebuilt ☒ Pre-Construction
☐ Found and tagged ☐ Reestablished ☒ Referenced ☐ Post-Construction

Narrative of corner identified and monument as found, set, reset, replaced, or removed:

☒ See sheet #2 for description(s):

Found monument that could be damaged or destroyed by planned water line construction project. Monument was referenced as shown on page 2. The purpose of this Corner Record is to preserve possible evidence only; no attempt was made to determine the relationship to property, centerline, or right of way lines.

Reference EBMUD CR Book C, Page 11 (Kong/Chou)

SURVEYOR'S STATEMENT

This Corner Record was prepared by me or under my direction in conformance with

the Professional Land Surveyors' Act on August 24, 2021

Signed  P.L.S. or R.C.E. No. 8889



COUNTY SURVEYOR'S STATEMENT

This Corner Record was received

and examined and filed SEP 02 2021

Signed  P.L.S. or R.C.E. No. 7010

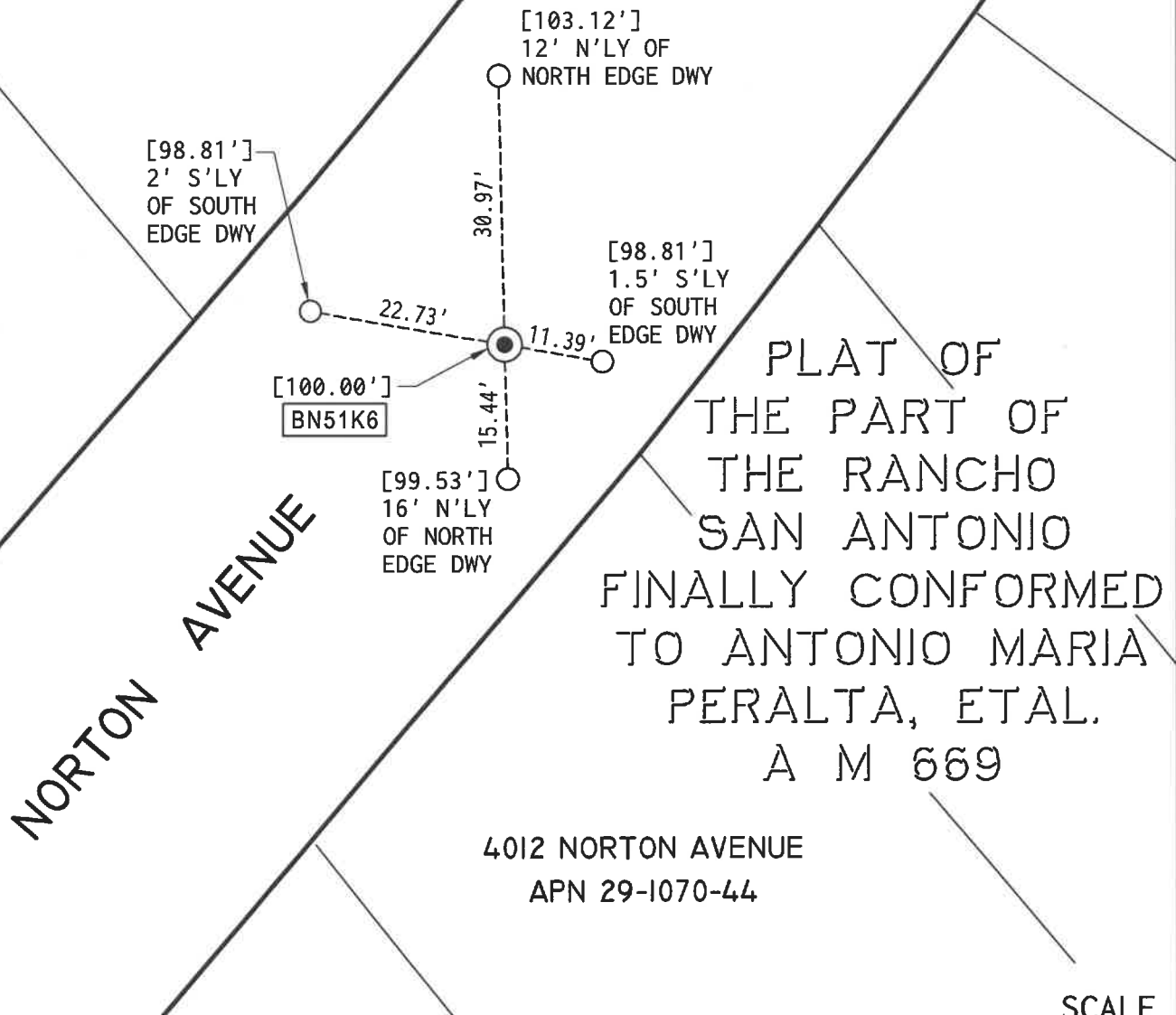
Title ALAMEDA COUNTY SURVEYOR

County Surveyor's Comment



OAKLAND

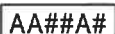
ALAMEDA COUNTY

LEGEND

FOUND 1/4" PIN IN CONCRETE STANDARD MONUMENT WELL, 1.2' BELOW GRADE

SET CONCRETE ANCHOR NAIL AND 1-1/2" ALUMINUM WASHER, STAMPED "EBMUD MON RP"
IN TOP OF CURB

ASSUMED ELEVATION (MEASURED USING A LEICA DIGITAL LEVEL)



ALAMEDA COUNTY MONUMENT I.D.

ADDRESS: 4012 NORTON AVENUE

APN: 29-1070-44

SCALE
1"=20'