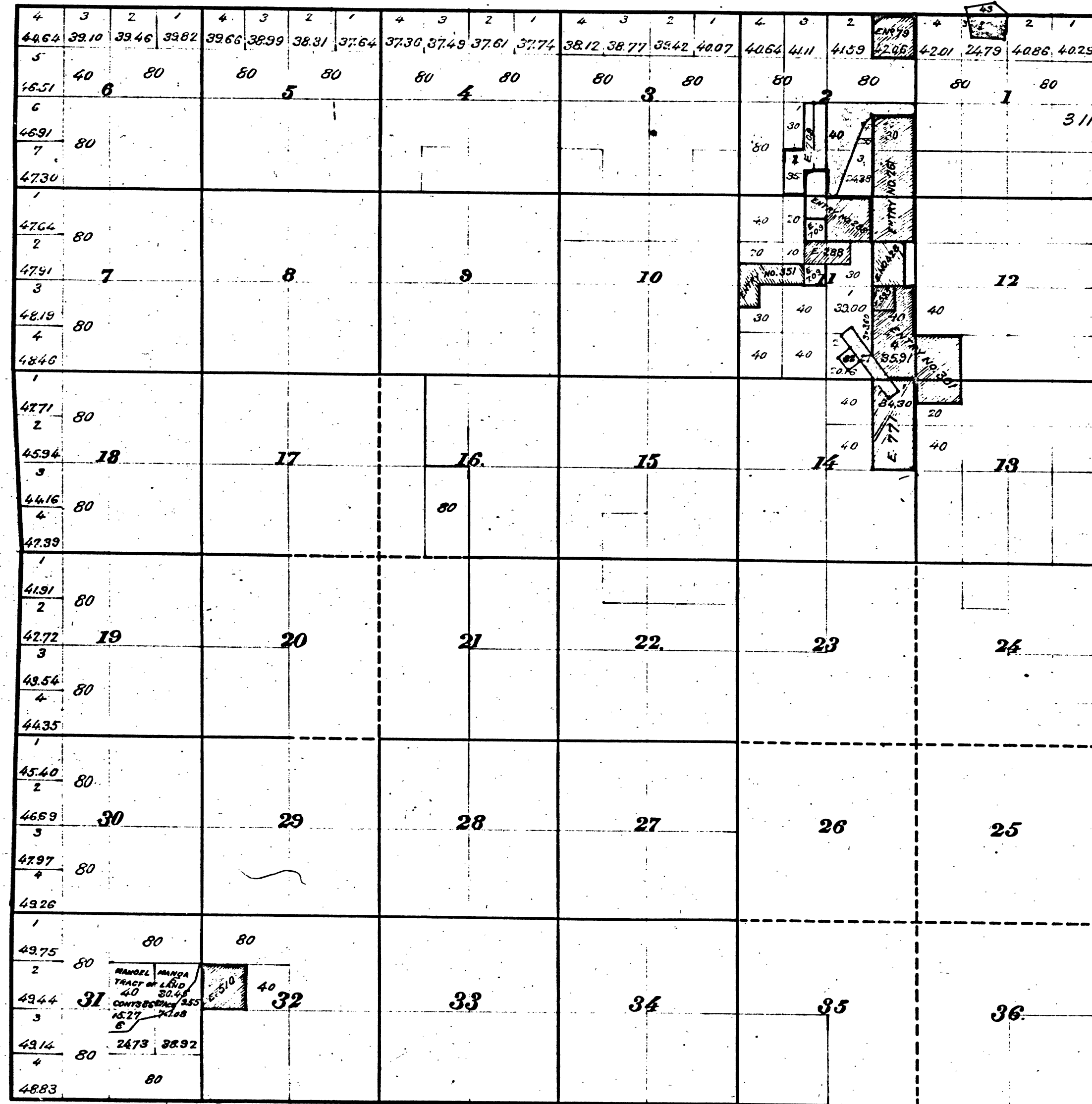


Township No 4 North, Range No 11 East, Mount Diablo Meridian.

TAB.
JEF



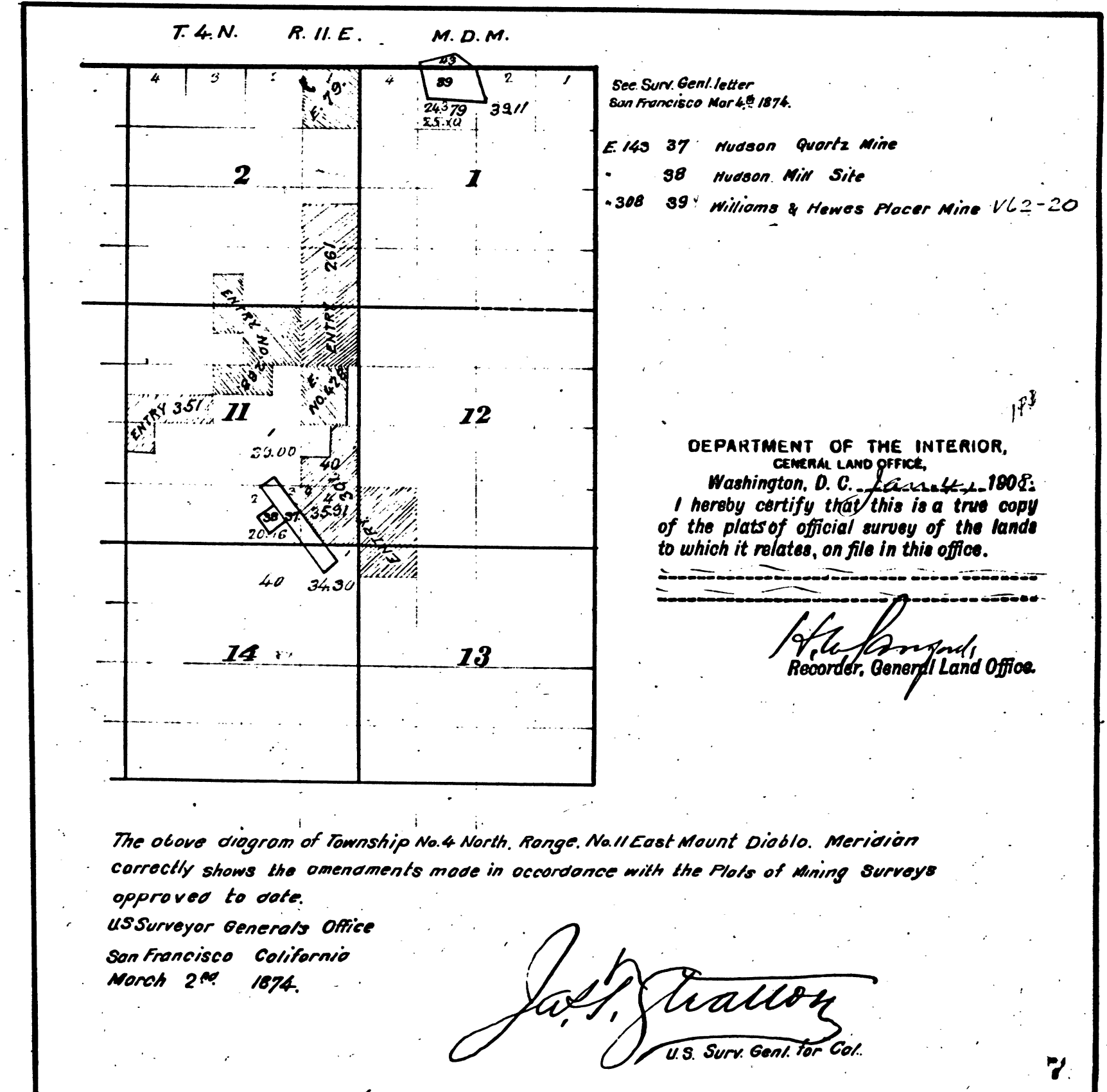
Mineral Land returned, January 18, '71.

ENTRY LOT
143 37 Hudson Quartz Mine (220) Pat. Dec. 9 '73 No 639 V62-21
38 Hudson Mill Site
39 Williams & Hewes Placer Mine Pat. Feb. 1 '78 No 1649 V62-20
40 Rising Star Mining Co's Mine

'79 L.S. Pat July 16 '72 No 386
261 Hpl. 22 '75 - 1310
288 May 4 '75 - 1325
301 Feb. 1 '76 - 1647
351 Feb. 12 '76 - 1738
428 Jan. 22 '76 - 1610
510 Aug. 20 '79 - 3356
595 Nov. 1 '79 - 3525
709 May 12 '80 - 3545
771 Mar 31 '82 - 5543

Manuel Manoa tract of Land in Sec. 31. S.C.L. Oct. 27, 1874.

Am'd Areas in Sec. 1. S.G.L. Mch. 4, '74.



Sec. Surv. Genl. letter
San Francisco Mar 4, 1874.

E 143 37 Hudson Quartz Mine
38 Hudson Mill Site
39 Williams & Hewes Placer Mine V62-20

DEPARTMENT OF THE INTERIOR,
GENERAL LAND OFFICE,
Washington, D. C. Jan 11, 1874.
I hereby certify that this is a true copy
of the plat of official survey of the lands
to which it relates, on file in this office.

H. B. Bryant
Recorder, General Land Office.

The above Diagram of Township No 4 North, Range No 11 East, Mount Diablo Meridian, correctly shows the
amendments made in accordance with the Plots of Mining Surveys approved to date
U.S. Surveyor General's Office
San Francisco California
December 31st 1875

J. S. Stratton
U.S. Surv. Genl. Cal. 41 318

The above diagram of Township No. 4 North, Range, No. 11 East Mount Diablo, Meridian
correctly shows the amendments made in accordance with the Plots of Mining Surveys
approved to date.
U.S. Surveyor General's Office
San Francisco California
March 2nd 1874.

J. S. Stratton
U.S. Surv. Genl. For Cal.

CHAINS

CHAINS

10 20 40 60 80 120

T 4 N R 11 E M D

BLM 156