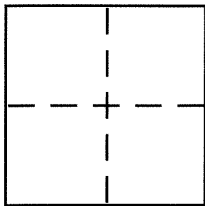


CORNER RECORD

City of BERKELEY

Document Number CR 8329
County of ALAMEDA, California

Brief Legal Description CITY OF BERKELEY MONUMENT B0285



CORNER TYPE

Government Corner Control ☒
Meander Property ☐
Rancho Other ☐
Date of Survey 3-25-2016

COORDINATES (Optional)

N. _____
E. _____
Zone _____ NAD27 , NAD83 ,
NAD83 Epoch _____
Elev. _____
Vert. Datum: NGVD29 , NAVD88
Meas. Units: Metric , Imperial

Corner – Left as found **X** Found and tagged , Established , Reestablished , Rebuilt ,

Identification and type of corner found: Evidence used to identify or procedure used to establish or reestablish the corner:
IN COMPLIANCE WITH SECTION 8771 OF THE PROFESSIONAL LAND SURVEYORS' ACT, THIS CORNER
RECORD IS BEING FILED TO ESTABLISH THE POSITION OF AN EXISTING MONUMENT PRIOR TO
STREET REHABILITATION CONSTRUCTION.

A description of the physical condition of the monument as found and as set or reset:
SEE PAGE 2

SURVEYOR'S STATEMENT

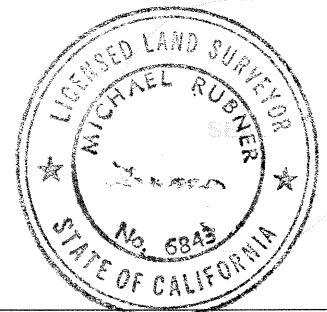
This Corner Record was prepared by me or under my direction in conformance with the Land Surveyor's Act on 4-4-2016.

Signed D. J. M. H. P.L.S or ~~P.C.E.~~ No. 5003

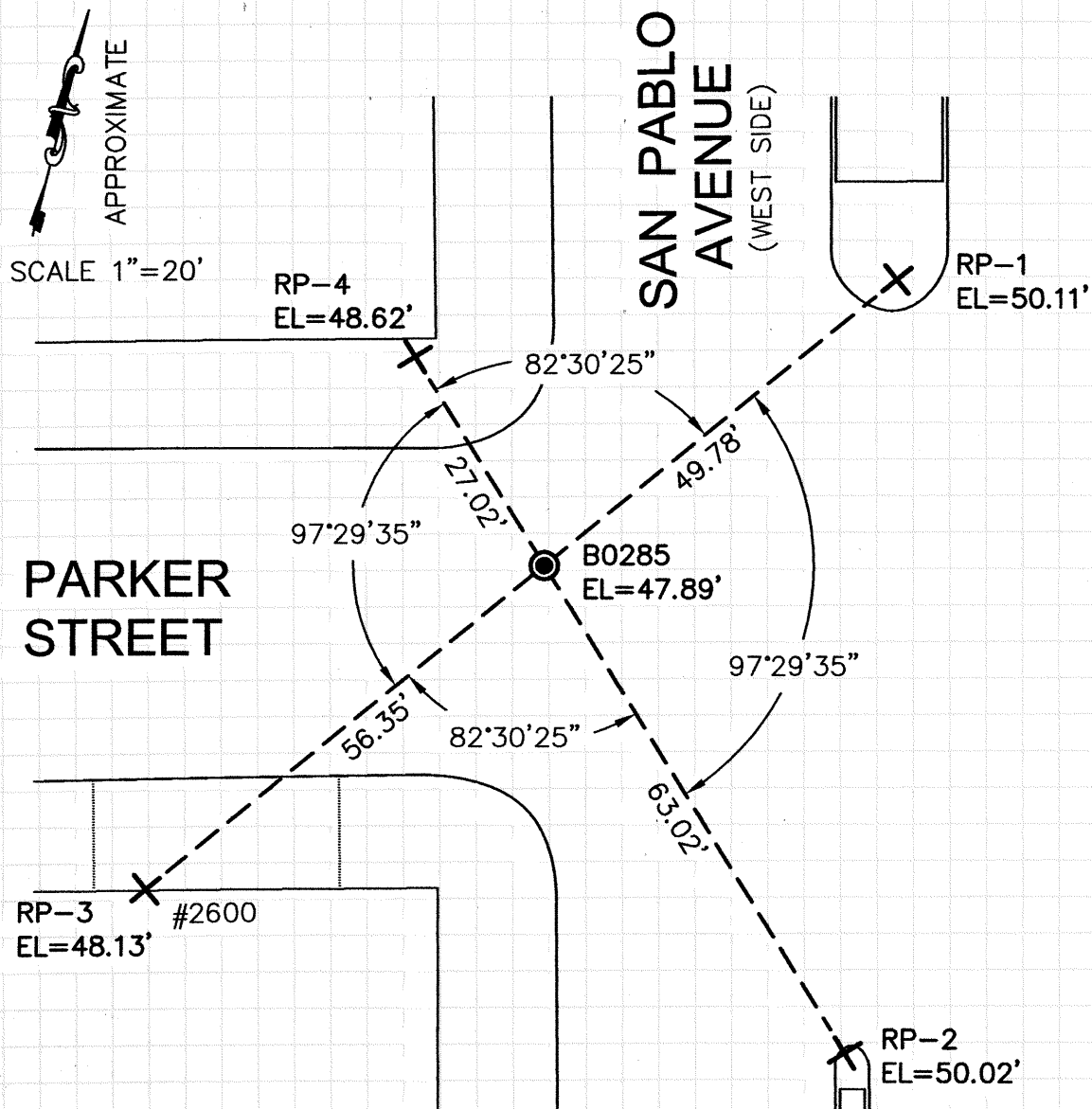


COUNTY SURVEYOR'S STATEMENT

This Corner Record was received 25 APRIL, 2016
and examined and filed 4 MAY, 2016
Signed Michael Rbm P.L.S or R.E. No. 6843
Title COUNTY SURVEYOR



County Surveyor's Comment



LEGEND

- 2-1/8" BRASS DISC STATE MONUMENT WITH A PUNCH MARK IN A STANDARD MONUMENT WELL
- + SET REFERENCE CROSS

NOTE:

THE EXISTING MONUMENT AS SHOWN IS REFERENCED BY STRAIGHT LINES BETWEEN RP-1 TO RP-3 AND RP-2 TO RP-4.