

SCALE: 1"= 300'

SHEET 1 OF 1

# RECORD OF SURVEY NO. 36 - 166

TOWN OF MAMMOTH LAKES, COUNTY OF MONO, STATE OF CALIFORNIA

BEING A SURVEY OF PROPERTY TRANSFERRED FROM THE UNITED STATES TO MAMMOTH COUNTY WATER DISTRICT. LOCATED IN THE SOUTH 1/2 OF SECTION 36, TOWNSHIP 3 SOUTH, RANGE 27 EAST, MOUNT DIABLO MERIDIAN AND MORE PARTICULARLY DESCRIBED IN THE PATENT DEED RECORDED IN BOOK 482, PAGE 516 OF OFFICIAL RECORDS ON FILE IN THE OFFICE OF THE MONO COUNTY RECORDER.

### SURVEYOR'S STATEMENT:

THIS MAP CORRECTLY REPRESENTS A SURVEY MADE BY ME OR UNDER MY DIRECTION IN CONFORMANCE WITH THE REQUIREMENTS OF THE PROFESSIONAL LAND SURVEYOR'S ACT AT THE REQUEST OF MAMMOTH COMMUNITY WATER DISTRICT IN OCTOBER, 2012.

Andrew K. Holmes 01/24/12  
ANDREW K. HOLMES DATE  
L.S. 4428



### COUNTY SURVEYOR'S STATEMENT:

THIS MAP HAS BEEN EXAMINED IN ACCORDANCE WITH SECTION 8766 OF THE PROFESSIONAL LAND SURVEYOR'S ACT THIS 31<sup>ST</sup> DAY OF JANUARY 2012.

MONO COUNTY SURVEYOR

John S. Parrish 1/31/2012 DATE  
JOHN S. PARRISH  
L.S. 5050



### RECORDER'S STATEMENT:

INSTRUMENT NO. : 2012.000612

FEE : \$ 8.00

FILED THIS 2<sup>ND</sup> DAY OF FEBRUARY 2012, AT 3:30 P.M. IN BOOK 5 OF RECORD OF SURVEY MAPS AT PAGE 13 AT THE REQUEST OF MAMMOTH COMMUNITY WATER DISTRICT

LYNDA ROBERTS  
MONO COUNTY RECORDER

BY: Sherri A. Hale  
DEPUTY COUNTY RECORDER

### PURPOSE OF SURVEY

THE REASON FOR THIS RECORD OF SURVEY IS AS SET FORTH IN THE PROFESSIONAL LAND SURVEYOR'S ACT, ARTICLE 5, 8762(b)(5): THE POINTS OR LINES SET DURING THE PERFORMANCE OF A FIELD SURVEY OF ANY PARCEL DESCRIBED IN ANY DEED OR OTHER INSTRUMENT OF TITLE RECORDED IN THE COUNTY RECORDER'S OFFICE ARE NOT SHOWN ON ANY SUBDIVISION MAP, OFFICIAL MAP, OR RECORD OF SURVEY.

### BASIS OF BEARINGS

THE BASIS OF BEARINGS FOR THIS SURVEY IS BETWEEN FOUND MONUMENTS AT THE SOUTH 1/4 AND THE SOUTH EAST CORNER OF SECTION 36 AS SHOWN ON RECORD OF SURVEY MAP BOOK 1, PAGE 76 AND LISTED HEREIN AS N 88°38'47" E

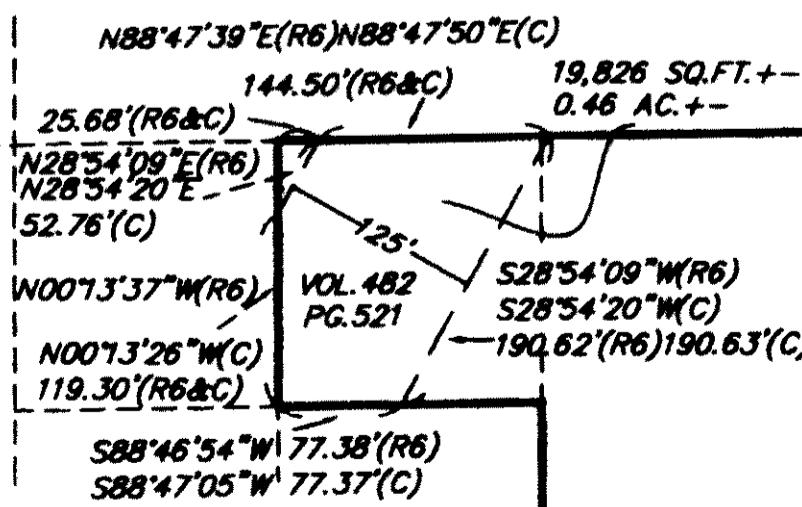
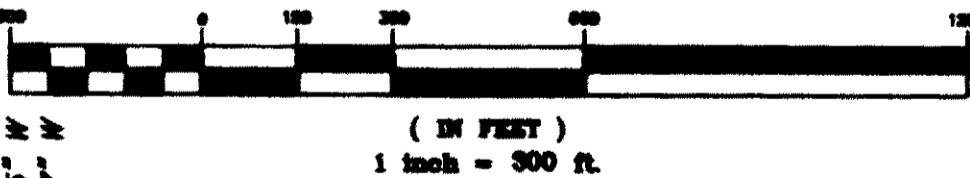
### RECORD INFORMATION:

- (R1) = RECORD INFORMATION PER GLO GROUP NO. 178, BY KARL SIEBECKER, APPROVED JUNE 29, 1929
- (R2) = RECORD INFORMATION PER BLM GROUP NO. 544, BY NORMAN J. McDONALD, APPROVED JUNE 24, 1968
- (R3) = RECORD INFORMATION PER RECORD OF SURVEY MAP BOOK 1, PAGE 76
- (R4) = RECORD INFORMATION PER BLM GROUP NO. 1253, BY THOMAS B. O'TOOLE, ACCEPTED NOVEMBER 13, 1998
- (R5) = RECORD INFORMATION PER RECORD OF SURVEY MAP BOOK 3, PAGE 13
- (R6) = RECORD INFORMATION PER GRANT DEED VOLUME 482, PAGE 521, DATED JUNE 30, 1987

### LEGEND:

- FOUND MONUMENT AS NOTED
- SET 2" IP & ALUM CAP "LS 4428" UNLESS NOTED OTHERWISE
- (R) RECORD
- (M) MEASURED
- (C) CALCULATED
- FND FOUND
- IP IRON PIPE
- BLM BUREAU OF LAND MANAGEMENT
- INF INYO NATIONAL FOREST

### GRAPHIC SCALE



### DETAIL RIGHT OF WAY N.T.S.

trud/holmes associates  
2222.115.dwg

