

7

RECORD OF COUNTY SURVEYOR'S OFFICE, STANISLAUS COUNTY, CALIFORNIA.

Swamp and Overflowed Land

Survey No. 240

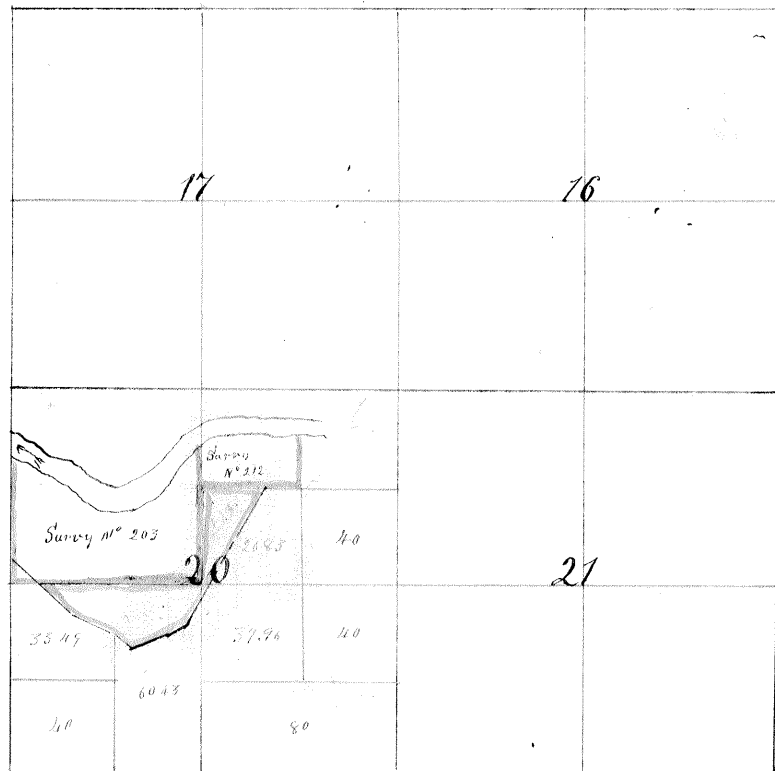
Township 2 S

Range 9 E

Section 20

The fractional N¹/₂ of SW¹/₄ and the frac¹/₇ E¹/₂ of

the SW¹/₄ of the N¹/₂ E¹/₂



Base and Meridian of Mount Diablo

Containing 42.02

Surveyed Augst 20th 1872 for Charles G. Hubner.

Field Notes

Beginning at the center of Sec 20. West 35.15 ch to U.S. Surveying line
thence on same S 43³/₄ E 9.92 ch thence S 65¹/₂ E 9.00 ch thence S 59 E 4.50 ch
thence N 70 E 8.00 ch thence N 61 E 4.83 ch thence N 53 E 15.00 ch thence N 31 E
7.00 ch N 33 E 11.97 ch thence surveying line west 12.90 ch thence
South 20.00 ch to the place of beginning

Run by the true Meridian Magnetic Variation 15 35 East

Surveyed in accordance with the Act of the Legislature concerning State
Lands approved March 28th 1868 and the instruction of the
Surveyor General

G. B. Douglass

County Surveyor Stanislaus County

Approved Sept 24th 1872

Robert Gardner

Surveyor General

Approval recd by me Sept 28th 1872

G. B. Douglass

County Surveyor