

MICHIGAN DEPT. OF TECHNOLOGY, MANAGEMENT & BUDGET/LABOR MARKET ANALYSIS - SOUTH CENTRAL AND WESTERN MICHIGAN
 CIVILIAN LABOR FORCE ESTIMATES
 By Place of Residence/Seasonally Unadjusted. April, 2012 **

Areas	CIVILIAN LABOR FORCE					EMPLOYMENT					UNEMPLOYMENT RATES		
	Apr 2012	Mar 2012	Apr 2011	Monthly Change	Annual Change	Apr 2012	Mar 2012	Apr 2011	Monthly Change	Annual Change	Apr 12	Mar 12	Apr 11
Battle Creek MSA	64,300	64,600	64,500	-300	-200	60,000	59,800	58,900	200	1,100	6.8	7.5	8.7
Jackson MSA	71,700	71,900	70,600	-200	1,100	66,200	65,700	63,700	500	2,500	7.7	8.6	9.7
Kalamazoo MSA	162,700	162,000	160,000	700	2,700	151,700	149,400	146,400	2,300	5,300	6.8	7.8	8.5
Kalamazoo Co.	126,200	125,400	124,050	800	2,150	118,400	116,600	114,275	1,800	4,125	6.2	7.0	7.9
Van Buren Co.	36,525	36,625	35,900	-100	625	33,300	32,800	32,125	500	1,175	8.8	10.4	10.5
Niles-BH MSA	72,100	72,600	71,600	-500	500	66,200	65,875	64,500	325	1,700	8.2	9.3	10.0
Allegan Co.	53,650	53,300	52,100	350	1,550	49,975	49,000	47,625	975	2,350	6.9	7.9	8.6
Barry Co.	28,675	28,625	28,225	50	450	27,025	26,725	26,200	300	825	5.8	6.6	7.2
Branch Co.	19,175	19,375	19,725	-200	-550	17,725	17,700	17,875	25	-150	7.6	8.6	9.4
Cass Co.	25,675	25,800	25,000	-125	675	24,075	23,825	23,050	250	1,025	6.3	7.6	7.7
Hillsdale Co.	18,825	18,975	18,975	-150	-150	17,200	17,150	16,975	50	225	8.6	9.6	10.5
Lenawee Co.	43,425	43,975	44,550	-550	-1,125	39,850	39,825	39,800	25	50	8.2	9.4	10.7
St. Joseph Co.	27,400	27,300	27,300	100	100	25,300	24,925	24,650	375	650	7.7	8.8	9.7
Michigan	4,585,000	4,632,000	4,608,000	-47,000	-23,000	4,216,000	4,215,000	4,143,000	1,000	73,000	8.0	9.0	10.1
U.S.A.*	153,905	154,316	152,898	-411	1,007	141,995	141,412	139,661	583	2,334	7.7	8.4	8.7

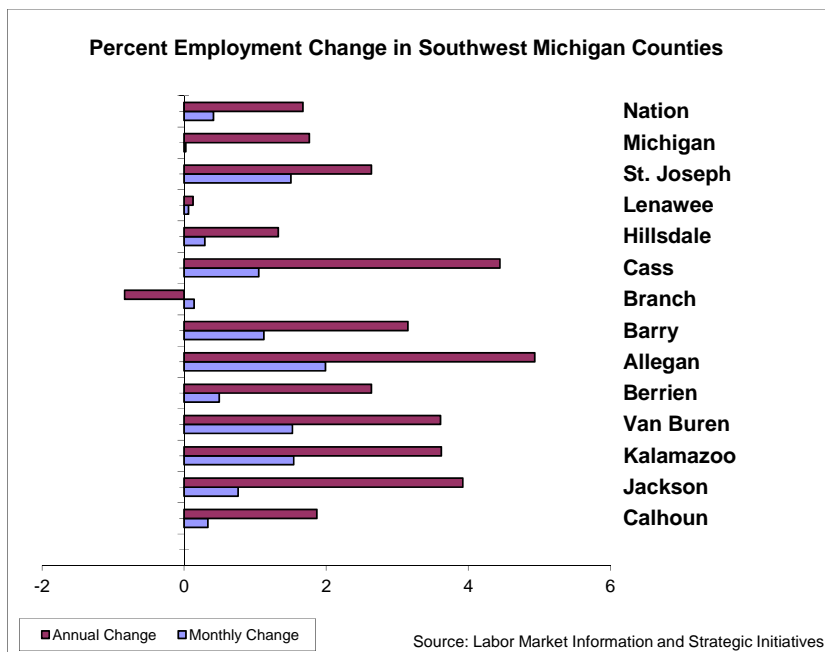
* Expressed in thousands; ** All labor force and employment numbers are rounded to the nearest 25 for counties, 100 for MSAs, and 1,000 for the State and the Nation.

April Jobless Rates Drop as Early Spring Hiring Ramps Up

In April, seasonal job gains were recorded in leisure and hospitality (including hotels, restaurants, and recreational activities), professional and business services, retail trade, and construction. Unemployment rates fell in April in all Southwest Michigan labor markets by a full percentage point on average.

Labor Force Down over the Month but Mostly Up Over the Year

The civilian labor force (the number of employed workers plus those looking for jobs) edged down in eight of the twelve regional labor markets, ranging from -100 in Van Buren to -550 in Lenawee County. Berrien County's workforce declined by 500. Over the year, eight regional counties recorded labor force gains, extending from +100 in St. Joseph to +2,150 in Kalamazoo County. Labor force also rose substantially in Allegan and Jackson counties (+1,550 and +1,100, respectively). April labor force levels continued to be substantially below last year's levels in Lenawee County (-1,125).

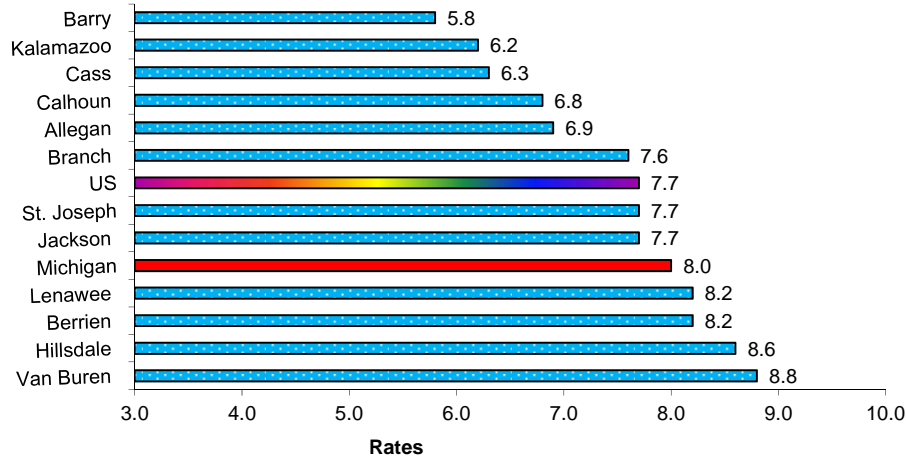


Employment Rose in All Local Markets over the Month

In April, employment by place of residence increased, as seasonal businesses continued to hire. Job additions ranged from +25 in Branch and Lenawee counties to +1,800 in Kalamazoo. Employment advanced by 975 in April in Allegan County, while Jackson and Van Buren each gained 500 jobs over the month.

Over the year, all regional counties added jobs, with the exception of Branch where employment fell by 150. Employment increases extended from +50 in Lenawee to +4,125 in Kalamazoo County. Considerable job growth over the year was also registered in Jackson (+2,500), Allegan (+2,350), and Berrien (+1,700).

Jobless Rates for Southwest Michigan Counties - April 2012



Source: Labor Market Information and Strategic Initiatives

Jobless Rates Declined in All Regional Counties in April and Continued to Show a Considerable Drop Over the Year

In April, unemployment rates decreased in all Southwest Michigan counties, from -0.7 percentage points in Calhoun to -1.6 in Van Buren County. Other counties with significant unemployment declines included Cass (-1.3 percentage points), Lenawee (-1.2), Berrien and St. Joseph (-1.1 each), and Allegan, Branch, and Hillsdale (-1.0).

Six regional counties (Barry, Kalamazoo, Cass, Calhoun, Allegan, and Branch) had lower jobless rates than the national rate of 7.7 percent. Michigan's unemployment rate was only three tenths of a percentage point higher than the national rate. Over the year,

regional jobless rates fell significantly by an average of about -1.8 percentage points.

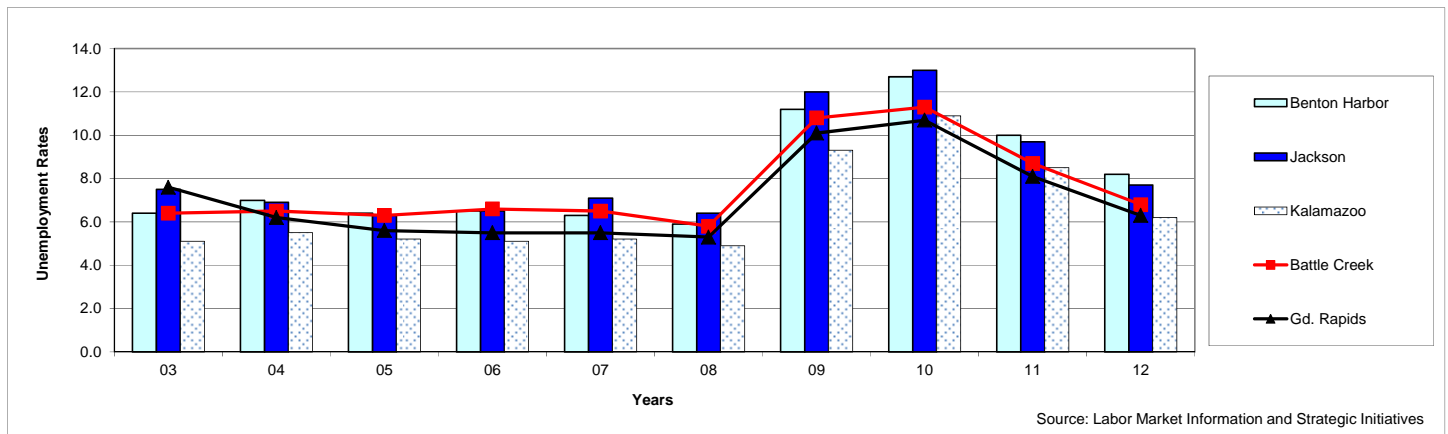
Local Metro Area April Unemployment Rates Since 2003

In April 2012, jobless rates continued to be significantly higher than a decade ago in the Benton Harbor (+1.8 percentage points) and Kalamazoo (+1.7) metro areas. April 2012 unemployment rates were slightly higher than the 2003 level in the Battle Creek and Jackson MSAs. The jobless rate in the Grand Rapids MSA was down by -1.3 percentage points over this period.

April unemployment rates rose from 2000 to 2004; and then remained relatively stable through 2008. Metro area jobless rates jumped sharply from 2008-2010 by 6.1 percentage points on average, coinciding with the national recession and the housing crisis. Since 2010, unemployment rates in all four metro areas have declined significantly by an average of -4.7 percentage points by April 2012. However, current rates remain slightly above the pre-recessionary 2007 levels: Benton Harbor (+1.9 percentage points); Kalamazoo (+1.0); Grand Rapids (+0.8); and Battle Creek (+0.3).

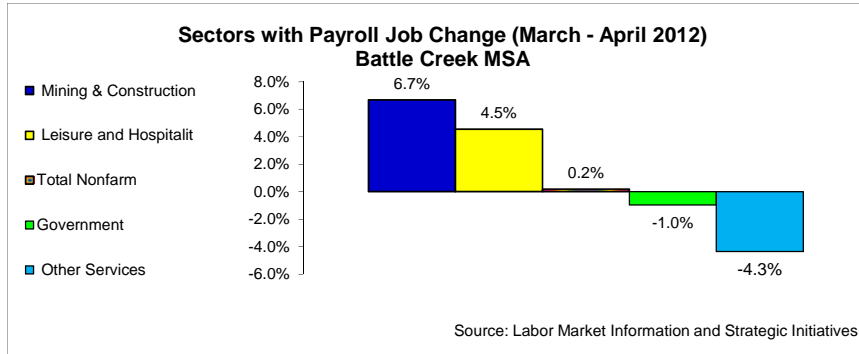
Year \ Areas	03	04	05	06	07	08	09	10	11	12
Benton Harbor	6.4	7.0	6.4	6.5	6.3	5.9	11.2	12.7	10.0	8.2
Battle Creek	6.4	6.5	6.3	6.6	6.5	5.8	10.8	11.3	8.7	6.8
Gd. Rapids	7.6	6.2	5.6	5.5	5.5	5.3	10.1	10.7	8.1	6.3
Jackson	7.5	6.9	6.3	6.5	7.1	6.4	12.0	13.0	9.7	7.7
Kalamazoo	5.1	5.5	5.2	5.1	5.2	4.9	9.3	10.9	8.5	6.8

Comparing the Trend of Local MSAs' April Unemployment Rates Since 2003



Source: Labor Market Information and Strategic Initiatives

Nonfarm Payroll Jobs Edge Upward in April in All Regional Metro Areas

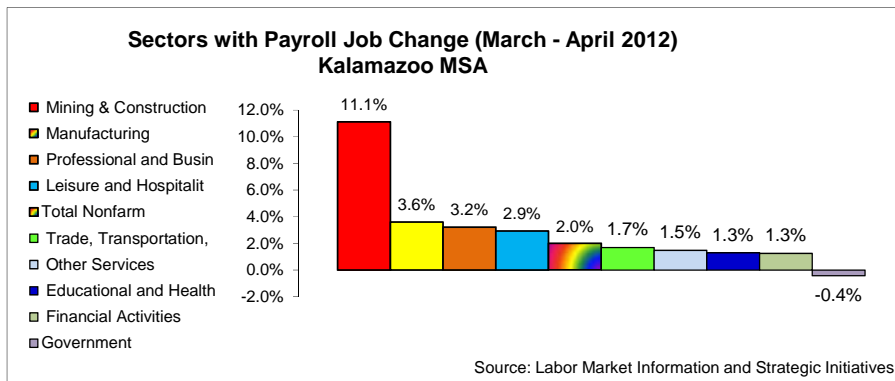
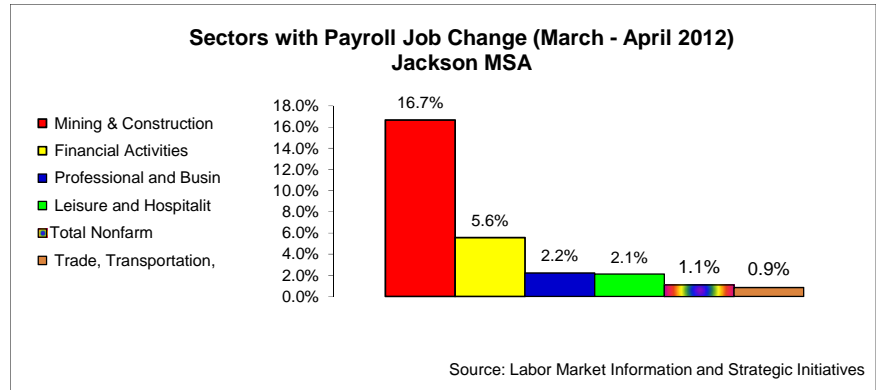


Payroll jobs in the Battle Creek MSA (Calhoun County) inched up 100 in April to a total of 56,200. The area gained seasonal employment in leisure and hospitality (+200) and construction (+100). However, government and other services each lost 100 jobs in April.

Over the year, private education and health services added 200 jobs, and construction jobs edged up by 100. Employment in all other sectors was either flat or down between 100 and 200. Total payroll jobs in Battle Creek were 200 below April 2011 levels.

Payroll jobs in the Jackson MSA (Jackson County) rose by 600 to 55,300. Construction employment advanced by 200, while a job gain of 100 each was recorded in retail, financial activities, professional and business services, and leisure and hospitality.

Over the year, private education and health care added 400 jobs, and employment in professional and business services was up 300. Manufacturing gained 200 jobs. Total payroll employment in Jackson was 1,300 above last year's April levels.



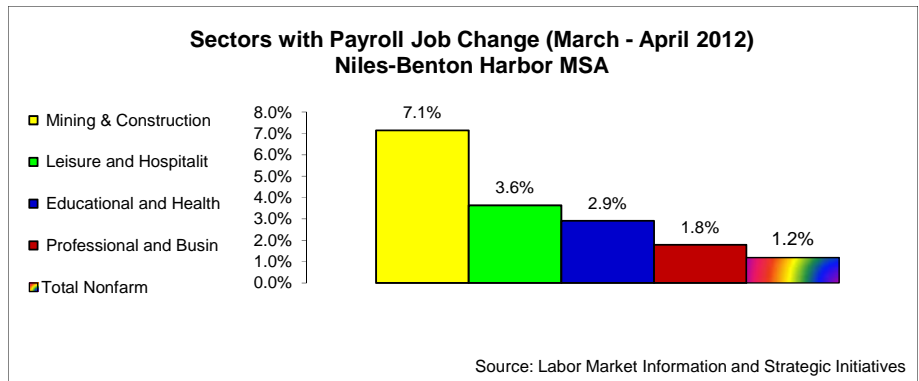
Nonfarm payroll jobs in the Kalamazoo-Portage MSA (Kalamazoo and Van Buren counties) grew by 2,700 to a total of 137,900. Seasonal job gains were recorded in professional and business services (+500), construction, retail trade, and leisure and hospitality (+400 each). Manufacturing employment climbed by 600 in April.

Over the year, employment in professional and business services advanced by 1,400, while private education and health services gained

1,100 jobs. Employment in retail trade was 700 above last year's levels. However, manufacturing cut 800 jobs. Construction and mining employment fell by 400 over the year. Total payroll jobs in Kalamazoo were 2,600 (or +1.9 percent) above April 2011 levels.

Payroll employment in the Niles-Benton Harbor MSA (Berrien County) increased in April by 700 to a total of 59,300. Employment in private education and health services rose by 300, and leisure and hospitality gained 200 jobs. The area also recorded small job additions of 100 each in construction and professional and business services.

Over the year, private education and health services employment escalated by 1,400, and jobs in professional and business services inched up 100. Employment in other sectors either declined or remained unchanged over the year. Total payroll jobs in Benton Harbor were 400 above the April 2011 level.



Industry Focus: Leisure and Hospitality Employment Seasonality in Southwest Michigan

The sector of leisure and hospitality comprises the **Arts, Entertainment, and Recreation** as well as **Accommodation and Food Services** industries. These industries include businesses such as parks and recreational services, museums, golf courses, tourism-related firms, hotels, and restaurants.

Employment in leisure and hospitality in Southwest Michigan is highly seasonal, peaking in the summer and declining in the fall and winter. In 2011, jobs in leisure and hospitality grew by 7.3 percent in Kalamazoo between January and July; 15.9% in Jackson, 16.7% in Battle Creek, and 32.0% in Niles-Benton Harbor. Leisure and hospitality employment in the Kalamazoo metro area is nearly as high as the other three area MSAs combined.



*Note: Data in this release is **not seasonally adjusted**. As a result, employment and unemployment trends may differ from previously released Michigan seasonally adjusted data.*

FOR MORE INFORMATION, please contact the Regional Analyst, Dr. Leonidas Murembya, in Jackson at 517/841-5634, or the Detroit Office of Labor Market Information at 313/456-3090, or visit our website at <http://www.michigan.gov/lmi>.

Southwest Michigan MSAs Payroll Employment - April 2012							
Battle Creek MSA							
	April 2012	March 2012	April 2011	Monthly Change	Monthly % Change	Annual Change	Annual % Change
Total Nonfarm	56,200	56,100	56,400	100	0.2%	-200	-0.4%
Mining, Logging, and Construction	1,600	1,500	1,500	100	6.7%	100	6.7%
Manufacturing	10,600	10,600	10,800	0	0.0%	-200	-1.9%
Trade, Transportation,	8,900	8,900	9,000	0	0.0%	-100	-1.1%
Financial Activities	1,400	1,400	1,400	0	0.0%	0	0.0%
Professional and Business	6,000	6,000	6,200	0	0.0%	-200	-3.2%
Educational and Health	10,300	10,300	10,100	0	0.0%	200	2.0%
Leisure and Hospitality	4,600	4,400	4,700	200	4.5%	-100	-2.1%
Other Services	2,200	2,300	2,300	-100	-4.3%	-100	-4.3%
Government	10,300	10,400	10,200	-100	-1.0%	100	1.0%
Jackson MSA							
	April 2012	March 2012	April 2011	Monthly Change	Monthly % Change	Annual Change	Annual % Change
Total Nonfarm	55,300	54,700	54,000	600	1.1%	1,300	2.4%
Mining, Logging, and Construction	1,400	1,200	1,400	200	16.7%	0	0.0%
Manufacturing	8,300	8,300	8,100	0	0.0%	200	2.5%
Trade, Transportation, Utilities	11,800	11,700	11,700	100	0.9%	100	0.9%
Information	400	400	300	0	0.0%	100	33.3%
Financial Activities	1,900	1,800	1,800	100	5.6%	100	5.6%
Professional and Business	4,600	4,500	4,300	100	2.2%	300	7.0%
Educational and Health	10,300	10,300	9,900	0	0.0%	400	4.0%
Leisure and Hospitality	4,800	4,700	4,900	100	2.1%	-100	-2.0%
Other Services	3,000	3,000	2,900	0	0.0%	100	3.4%
Government	8,800	8,800	8,700	0	0.0%	100	1.1%
Kalamazoo MSA							
	April 2012	March 2012	April 2011	Monthly Change	Monthly % Change	Annual Change	Annual % Change
Total Nonfarm	137,900	135,200	135,300	2,700	2.0%	2,600	1.9%
Mining, Logging, and Construction	4,000	3,600	4,400	400	11.1%	-400	-9.1%
Manufacturing	17,300	16,700	18,100	600	3.6%	-800	-4.4%
Trade, Transportation, Utilities	24,100	23,700	23,400	400	1.7%	700	3.0%
Information	1,100	1,100	1,100	0	0.0%	0	0.0%
Financial Activities	8,100	8,000	7,900	100	1.3%	200	2.5%
Professional and Business	16,000	15,500	14,600	500	3.2%	1,400	9.6%
Educational and Health	23,400	23,100	22,300	300	1.3%	1,100	4.9%
Leisure and Hospitality	14,100	13,700	13,900	400	2.9%	200	1.4%
Other Services	6,900	6,800	6,400	100	1.5%	500	7.8%
Government	22,900	23,000	23,200	-100	-0.4%	-300	-1.3%
Niles-Benton Harbor MSA							
	April 2012	March 2012	April 2011	Monthly Change	Monthly % Change	Annual Change	Annual % Change
Total Nonfarm	59,300	58,600	58,900	700	1.2%	400	0.7%
Mining, Logging, and Construction	1,500	1,400	1,700	100	7.1%	-200	-11.8%
Manufacturing	11,600	11,600	11,800	0	0.0%	-200	-1.7%
Trade, Transportation, Utilities	10,300	10,300	10,700	0	0.0%	-400	-3.7%
Information	500	500	500	0	0.0%	0	0.0%
Financial Activities	2,300	2,300	2,400	0	0.0%	-100	-4.2%
Professional and Business	5,700	5,600	5,600	100	1.8%	100	1.8%
Educational and Health	10,600	10,300	9,200	300	2.9%	1,400	15.2%
Leisure and Hospitality	5,700	5,500	5,700	200	3.6%	0	0.0%
Other Services	2,500	2,500	2,600	0	0.0%	-100	-3.8%
Government	8,600	8,600	8,700	0	0.0%	-100	-1.1%

Southwest Michigan Works! Agencies Local Area Employment Data – 2012

		January	February	March	April	May	June	July	August	September	October	November	December	Ann Avg
Barry-Branch-Calhoun														
	Labor force	110,650	111,500	112,650	112,175									111,750
	Employment	101,800	102,875	104,225	104,700									103,400
	Unemployed	8,850	8,625	8,425	7,450									8,325
	Rate	8.0	7.7	7.5	6.7									7.5
Barry														
	Labor force	28,375	28,600	28,625	28,675									28,575
	Employment	26,400	26,650	26,725	27,025									26,700
	Unemployed	1,975	1,950	1,900	1,650									1,875
	Rate	6.9	6.8	6.6	5.8									6.5
Branch														
	Labor force	19,200	19,075	19,375	19,175									19,200
	Employment	17,350	17,350	17,700	17,725									17,525
	Unemployed	1,850	1,725	1,675	1,450									1,675
	Rate	9.6	9.1	8.6	7.6									8.7
Calhoun														
	Labor force	63,100	63,800	64,600	64,300									64,000
	Employment	58,100	58,900	59,800	60,000									59,200
	Unemployed	5,000	4,900	4,800	4,300									4,800
	Rate	8.0	7.7	7.5	6.8									7.5
Berrien-Cass-Van Buren														
	Labor force	132,100	133,900	135,000	134,275									133,825
	Employment	118,675	120,650	122,475	123,550									121,350
	Unemployed	13,425	13,250	12,500	10,750									12,475
	Rate	10.2	9.9	9.3	8.0									9.3
Berrien														
	Labor force	70,800	71,500	72,600	72,100									71,800
	Employment	63,700	64,400	65,900	66,200									65,000
	Unemployed	7,100	7,100	6,700	5,900									6,700
	Rate	10.1	9.9	9.3	8.2									9.4
Cass														
	Labor force	25,275	25,825	25,800	25,675									25,650
	Employment	23,150	23,775	23,825	24,075									23,700
	Unemployed	2,125	2,025	1,975	1,625									1,925
	Rate	8.4	7.9	7.6	6.3									7.5
Van Buren														
	Labor force	35,975	36,600	36,625	36,525									36,425
	Employment	31,850	32,450	32,800	33,300									32,600
	Unemployed	4,125	4,150	3,825	3,225									3,825
	Rate	11.5	11.3	10.4	8.8									10.5
Kalamazoo-St. Joseph														
	Labor force	149,250	151,225	152,700	153,600									151,700
	Employment	137,650	140,025	141,525	143,700									140,725
	Unemployed	11,600	11,200	11,200	9,900									10,975
	Rate	7.8	7.4	7.3	6.4									7.2
Kalamazoo														
	Labor force	122,150	124,150	125,400	126,200									124,475
	Employment	113,225	115,425	116,600	118,400									115,925
	Unemployed	8,925	8,700	8,800	7,800									8,550
	Rate	7.3	7.0	7.0	6.2									6.9
St. Joseph														
	Labor force	27,100	27,075	27,300	27,400									27,225
	Employment	24,425	24,575	24,925	25,300									24,800
	Unemployed	2,675	2,500	2,400	2,100									2,425
	Rate	9.9	9.2	8.8	7.7									8.9
South Central Michigan														
	Labor force	132,600	134,175	134,850	133,925									133,900
	Employment	119,975	121,750	122,650	123,200									121,900
	Unemployed	12,625	12,425	12,200	10,725									12,000
	Rate	9.5	9.3	9.0	8.0									9.0
Hillsdale														
	Labor force	18,650	18,575	18,975	18,825									18,750
	Employment	16,700	16,725	17,150	17,200									16,950
	Unemployed	1,950	1,850	1,825	1,625									1,825
	Rate	10.5	9.9	9.6	8.6									9.7
Jackson														
	Labor force	70,700	71,900	71,900	71,700									71,500
	Employment	64,300	65,500	65,700	66,200									65,400
	Unemployed	6,400	6,300	6,200	5,500									6,100
	Rate	9.1	8.8	8.6	7.7									8.5
Lenawee														
	Labor force	43,225	43,750	43,975	43,425									43,600
	Employment	38,950	39,500	39,825	39,850									39,525
	Unemployed	4,275	4,250	4,150	3,575									4,075
	Rate	9.9	9.7	9.4	8.2									9.3